

LINDY®

CONNECTION PERFECTION

5.25" CD/DVD/BD Drive Enclosure

Firmware Update Guide

English

No. 42937 USB 2.0/eSATA/FW400

- * **Firmware updates only for experienced users!**
- * **This Firmware update is only possible under Windows XP**
- * **Firmware update is via USB**
- * **A SATA hard drive must be installed into the enclosure**

www.lindy.com



For Home and Office Use
Tested to Comply with FCC Standards



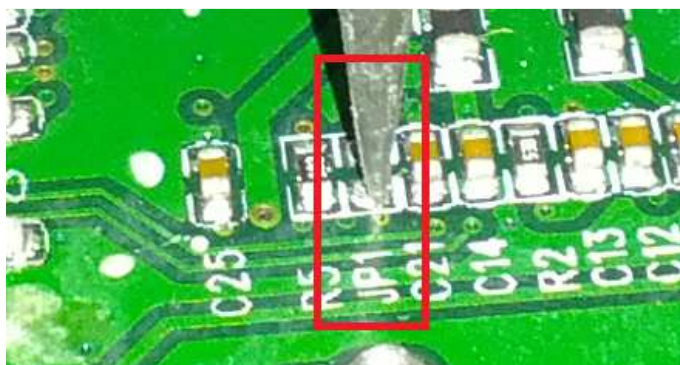
© LINDY ELECTRONICS LIMITED & LINDY-ELEKTRONIK GMBH - SECOND EDITION (March 2012)

Firmware update to fix eSATA and ODD (Optical disc drives) compatibility

1. Install *jre-6u5-windows-i586-p-s.exe* and *Uploader_3_04_0000_0005.exe* in Windows XP and reboot your computer
2. Copy *clonefirmware.bin* and *clonefirmware.txt* (included with this zip package) to **C:\Program Files\Oxford Semiconductor\Oxsemi Uploader** and overwrite the existing files.
3. Follow instruction manual of 42937 for proper procedure in opening and disassembling the drive enclosure.
4. Use USB to connect enclosure to your computer.
5. Once the top cover has been removed, please unscrew the transparent plastic cover over the PCB as shown in the following picture. Keep the enclosure connected.



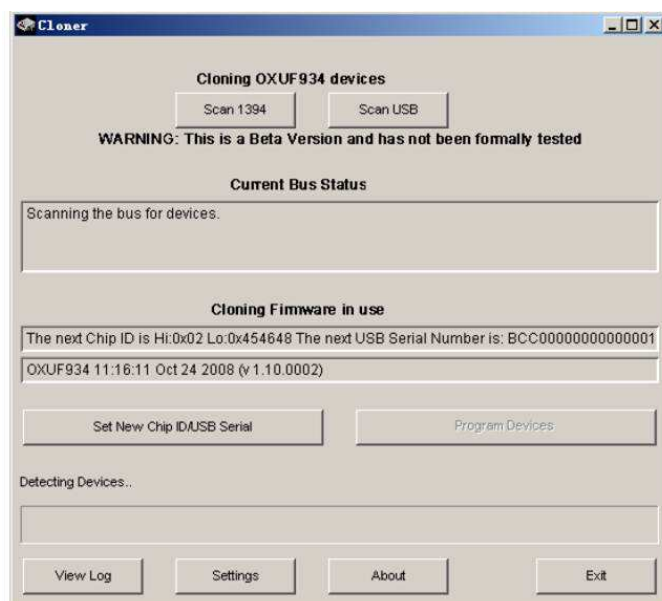
6. Short the "JP1" (see picture below) on the PCB by using a slotted screw driver and then power on the enclosure, wait for 5 seconds and then release JP1. Keep the enclosure powered.



7. Windows will find new hardware named "**Oxford USB Device, running upload acceleration fragment**".
!! The firmware update only works when running in this mode !!



8. Run the **Oxsemi Cloner** icon on Desktop
9. Click **Scan USB** and check if the button **Program devices** is highlighted. If it is not, repeat from step 6)
10. Click **Program devices** to program the device. Once the update has been completed, power off the enclosure and then power on. Windows should now see **USB mass storage device**. The enclosure is now running in normal mode and is ready for use.



11. Finished.
If you also want to use and enable the FireWire daisy chain feature refer to the further serial number change on the next page.

5.25" CD/DVD/BD Drive Enclosure

Firmware Update Guide

English

No. 42937 USB 2.0/eSATA/FW400

- * **Firmware updates only for experienced users!**
- * **This Firmware update is only possible under Windows XP**
- * **Firmware update is via USB**
- * **A SATA hard drive must be installed into the enclosure**

www.lindy.com



For Home and Office Use
Tested to Comply with FCC Standards



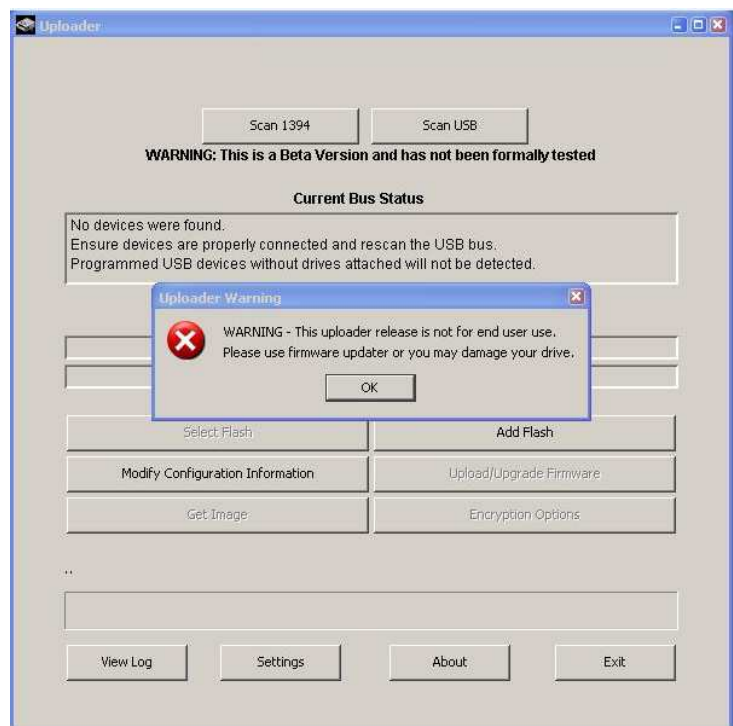
© LINDY ELECTRONICS LIMITED & LINDY-ELEKTRONIK GMBH - SECOND EDITION (March 2012)

Firmware update to fix FireWire daisy chain problem for multiple enclosures

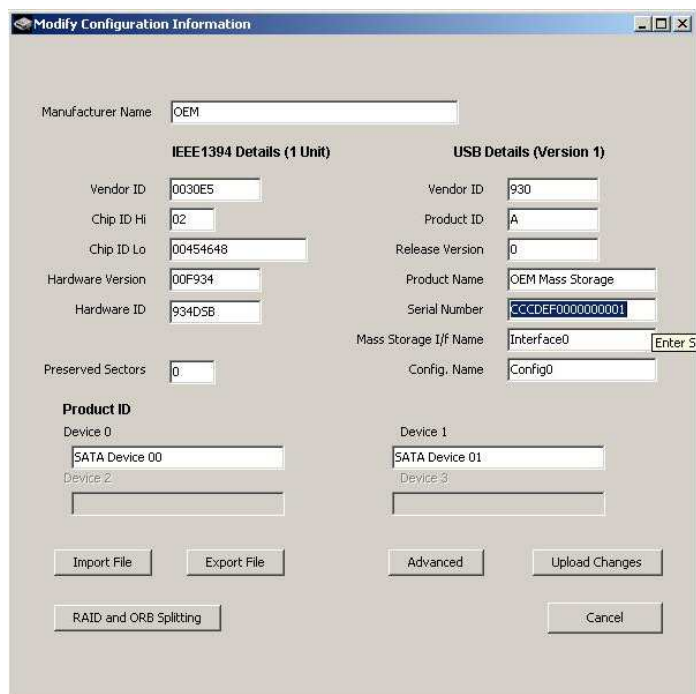
The 5.25" CD/DVD/BD Drive Enclosure firmware uses identical serial numbers installed in the Oxford chipset. Therefore this enclosure cannot be daisy chained with each other. The following guide describes how to enable the daisy chain feature by changing the serial number in the Oxford chipset.

1. Install **jre-6u5-windows-i586-p-s.exe** and **Uploader_3_04_0000_0005.exe** in Windows XP and reboot your computer.
2. Copy **clonefirmware.bin** and **clonefirmware.txt** (included in this zip package) to **C:\Program Files\Oxford Semiconductor\Oxsemi Uploader** and overwrite the existing files.
3. A hard drive or optical drive must be installed in the enclosure.
4. Use USB or FireWire to connect the enclosure to your computer and power it on.
5. Run the **Oxsemi Uploader** icon on Desktop.

6. Click **OK** on the Uploader warning that pops up.



7. Click on **Modify Configuration Information**



8. The serial number has to be changed in order to make FireWire daisy chain work. Please enter a different serial number – we suggest to change the last digit only – and click on **Upload Changes**
9. Once the update has been completed, power off the enclosure and then power on. - Finished