

LINDY USB2.0 Extender & IP Device Server Pro

USB 2.0 Hi-Speed-2 Port MFP Server

Quick Installation Guide

①. Introduction

This document describes the steps for installing and configuring LINDY USB MFP Server in the Windows environment.

②. Package Contents

If any item is missing, please contact the shop where you bought this product.

- One LINDY USB MFP Server (x1)
- One Control Center Software CD (x1)
- One DC IN 12V/1A Power Adaptor (x1)

③. OS Supported

Windows 2000/XP/2003

④. Physical Description

1. **Power Adaptor Connector:** for DC IN 12V/1A power adaptor
2. **Init Button:** for restoring the configurable parameters to the default values
3. **Ethernet Connector:** connected to a twisted pair category 5 cable
4. **USB Host Ports:** USB 1.1/2.0 low, full, and Hi-Speed compliant
5. **LED Indicators**
 - *Power Indicator* is lit while power is applied. If it is not lit, or if it blinks, there is a problem with this Server or power adaptor.
 - *Link Status* is lit while network is applied. If it is not lit, it indicates that this server does not connect to the network.
 - *Status Indicator* blinks to indicate network activity.
 - *USB1 Indicator* is lit while a USB device connects to USB1 Port

of this Server. If it is not lit, or if it blinks, there is a problem with the USB device or this Server.

- *USB2 Indicator* is lit while a USB device connects to USB2 Port of this Server. If it is not lit, or if it blinks, there is a problem with the USB device or this Server.

⑤. **Connect USB MFP Server to Your Wired Network**

- I. Connect USB MFP Server to the wired network, such as a LAN switch or a LAN hub, using a LAN cable.
- II. Connect USB MFP Server drives or flash ROM disks, or all-in-one series printers (AIO/MFP), or USB speaker, or USB 1.1 camera to the server using USB cables.
- III. Plug in the power adaptor (included in this package) to power on the USB MFP server.

⑥. **Install Utility**

- I. Insert the included CD-ROM into the personal computer. The Autorun screen should appear.
- II. Click **Install Product** button.
- III. Click **Next**, if you see any Next button in installation windows.
- IV. Click **Finish**.

⑦. **Configure USB MFP Server with Utility**

Using the Control Center Software (Fig1):

1. Run the Control Center. It will automatically search the existing servers and display their status.

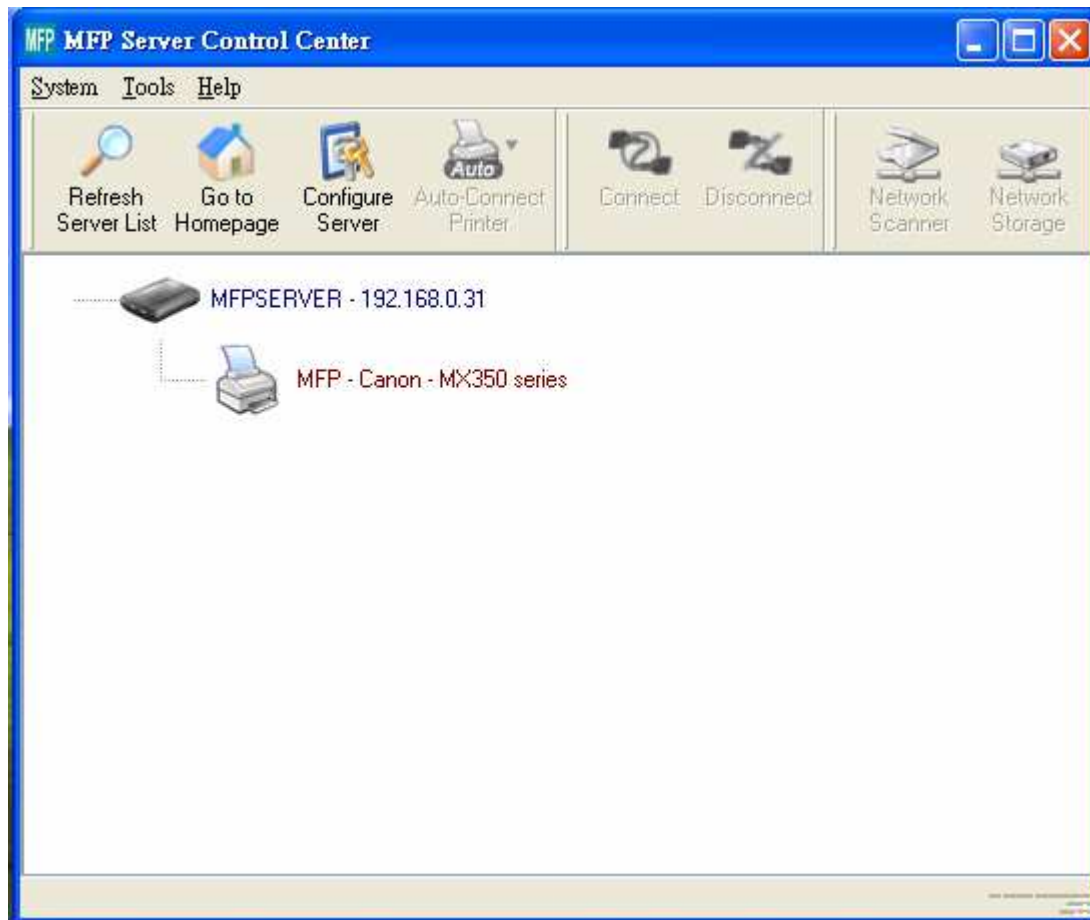


Figure 1 Control Center

2. Select the server that you want to configure. Double click the selected server and you will get the web pages of the server.



Welcome to the USB MFP Server web configuration.

- Click **STATUS** to show your system status.
- Click **CONFIG** to adjust each setting of the device.
- Click **CONTACT US** to view the company info.

Figure 2 Web Page

3. Click "CONFIG" icon and then enter Administrator (default: *admin*) and Password (default: *admin*) to login.
4. Click the TCP/IP in left column and assign IP address to USB MFP server as Fig3. Please choose one method to set the IP address of the server. You can automatically get IP address by using DHCP or manually assign an IP address to the server.

The screenshot shows the 'USB MFP Server' web interface. At the top, there's a navigation bar with 'HOME', 'STATUS', and 'CONFIG' links, and language options: 'English | Japanese | Traditional Chinese'. Below this is a 'CONFIG' section with a left-hand menu containing: 'General Configuration', 'TCP/IP' (highlighted), 'Supported Protocols', 'User Accounts', 'SNMP', 'Email', 'Restart Server', and 'Maintenance'. The main content area is titled 'Set TCP/IP Configuration'. It has a sub-header 'TCP/IP' and two radio button options: 'Automatically get IP by DHCP' (which is selected) and 'Static IP'. Under 'Static IP', there are input fields for 'IP Address' (containing '192.168.1.100'), 'Subnet Mask' (containing '255.255.255.0'), 'Default Gateway', and 'DNS Server'. At the bottom of the form are 'Submit' and 'Reset' buttons.

Figure 3 TCP/IP Setting

⑧. Install the Driver of the USB Device

Some USB devices, like printers or MFPs (multifunction printers), require to install vendor-supplied driver (usually on CDROM). For those USB devices that do not need to install driver, please skip to next step.

- A. Insert the CDROM into the CD drive and run the "autorun" program.
- B. Follow the instructions of the installation program to install driver.
- C. When the installation program asks you to plug-in the USB device, run the "Control Center".
- D. In the Control Center, click the USB MFP server that has the

desired USB device attached.

- E. Click the desired USB device as Fig4.



Figure 4 Click the Desired USB Device

- F. Click the “Connect” button. Then the message “Manually Connect by your_computer_name” will be shown, as Fig5.

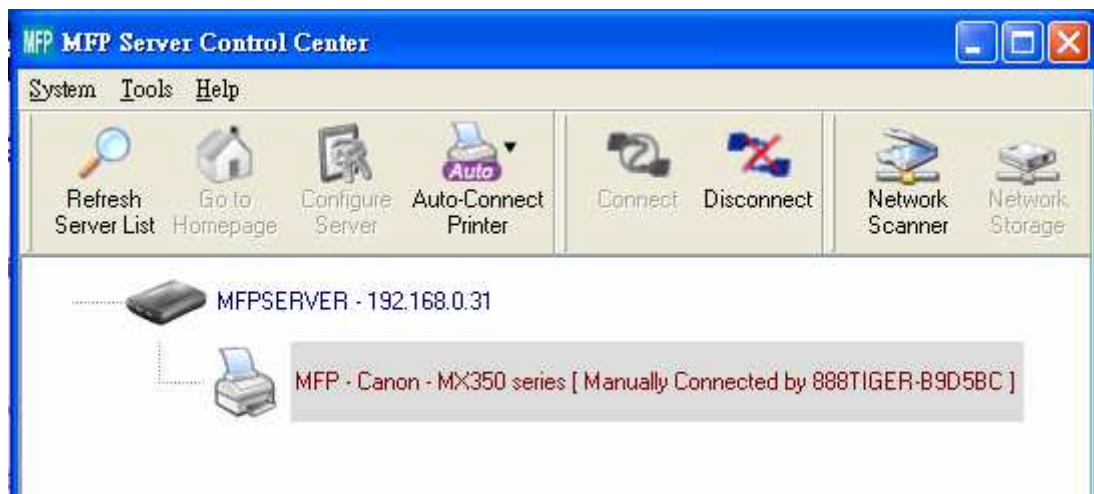


Figure 5 Device Connected

- G. Now, the installation program will detect the USB device and continue to install driver.
- H. After the installation is completed, click the USB device in the Control Center and then click the “Disconnect” button to disconnect the USB device.

⑨. Use the USB Device

- A. In the Control Center, click the USB MFP server that has the

desired USB device attached.

- B. Click the desired USB device as Fig 4.
- C. Click the “Connect” button. Then the message “Manually Connect by *your_computer_name*” will be shown, as Fig 5.
- D. Now, PC will detect the plug-in of the USB device. The “connect” operation is a software operation that simulates an actual USB device plug-in. That is to say, when you do a “connect” operation in the Control Center, PC can then detect a USB device’s plug-in, although actually you do not plug in any USB device.
- E. Then, just use the USB device as if it is connected directly to your PC’s USB port.
- F. After you finish using the USB device, click the USB device in the Control Center and then click the “Disconnect” button to disconnect the USB device, as Fig 6. Other PCs can not “Connect” the USB device until you “Disconnect” that USB device. That is to say, only one PC is allowed to connect the USB device at the same time.

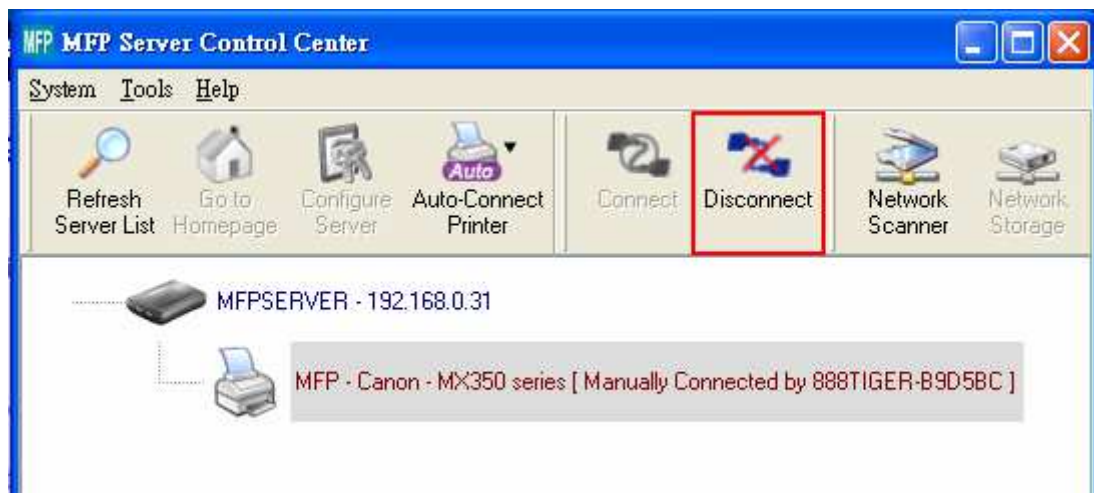


Figure 6 The Disconnect Button

⑩. An Example of USB Storage

If you connect a USB storage, like Fig 7, your PC will have a new disk. If the USB storage is a flash drive, the new disk is a “removable disk”.

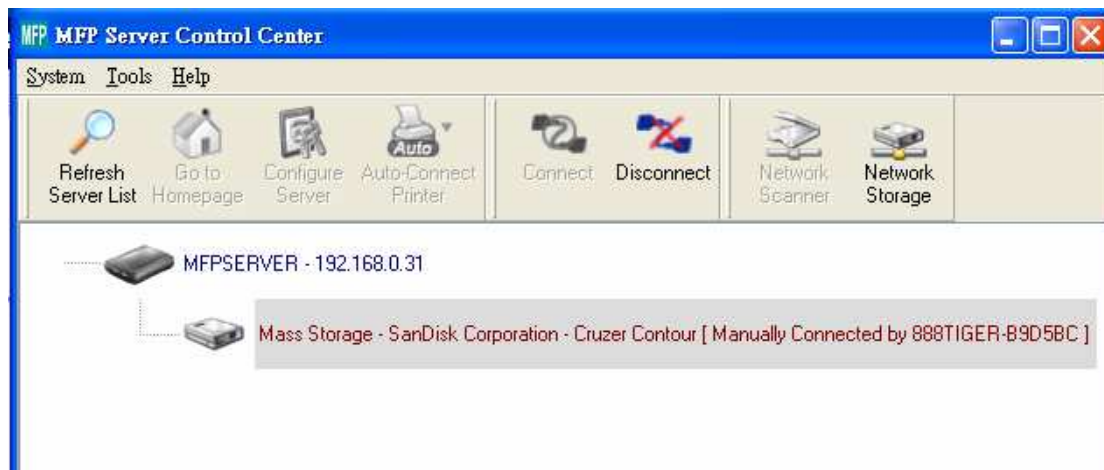


Figure 7 The USB Storage

You can see the storage icon in the system tray, as Fig8.

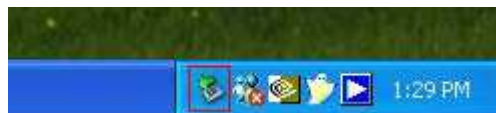


Figure 8 The System Tray

Then just use the new disk as a general disk. After you finish the disk operations, click the storage icon in the system tray and choose “Safely remove USB Mass Storage Device” to remove the USB storage, as Fig10.



Figure 9 Removing the USB Storage

Then, in the Control Center, click the USB storage device and click the “Disconnect” button to disconnect the USB storage device.

⑪. Default Parameters

Some of the important default parameters are shown below.

- Administrator: admin
- Password: admin
- Server Name: MFP SERVER

- Workgroup: WORKGROUP
- Static IP: 192.168.1.100
- DHCP: enabled