



Sil3124 SATARAID5™
Quick Installation Guide
(Windows version)

Document Number: DOC-003124-204

Version 1.0

Copyright © 2005, Silicon Image, Inc.

All rights reserved. No part of this publication may be reproduced, transmitted, transcribed, or translated into any language or computer format, in any form or by any means without prior written permission of:

Silicon Image, Inc.
1060 East Arques Ave.
Sunnyvale CA 94085

Silicon Image, the Silicon Image logo and SATARAID5 are the trademarks or registered trademarks of Silicon Image, Inc. ("Silicon Image") in the United States and other countries. The information contained in this document is provided by Silicon Image merely as a courtesy and is, to the knowledge of Silicon Image, accurate. However, Silicon Image is under no obligation to update and/or keep current the information contained in the document. Silicon Image disclaims any and all liability resulting from the use of the information contained in this document and any reliance on such information shall be at the sole risk of the relying party. Silicon Image expressly reserves the right to change the information contained herein without notice.

Windows is a registered trademark of Microsoft Corporation in the United States and other countries.

Sun, Sun Microsystems and JAVA are trademarks or registered trademarks of Sun Microsystems, Inc. in the United States and other countries.

Sil3124 SATARAID5 Installation

Overview

This document guides you through the installation procedure of the **Sil3124 SATARAID5** software and the JAVA Runtime Environment (JRE) from Sun Microsystems (if it is not already installed on your system). The Sil3124 SATARAID5 software is available for Microsoft® Windows® 2000, Windows XP and Windows 2003. The following installation packages are available:

- ✓ **3124-W-I32-R**: 32-bit version (all Windows versions)
- ✓ **3124-W-I64-R**: 64-bit version (Windows XP and Windows 2003 only)

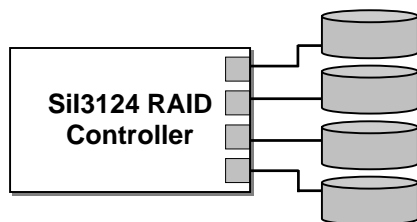
Be sure to install the installation package that is appropriate for your system.

You can use the installation package to automatically install, repair or remove the SATARAID Manager and Driver software components for the RAID controller in your system. You can also manually remove those components through the Windows Control Panel.

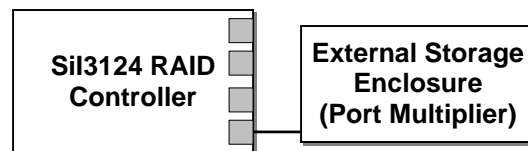
Physical Installation and External Connections

Before installing the SATARAID5 software, you should install the Sil3124 controller hardware into your computer system. Refer to the installation instructions for the Sil3124 controller.

You can connect a SATA hard disk to each of the SATA ports on the Sil3124 RAID controller, as shown in the illustration below. You can also connect one or more of the SATA ports to an external storage enclosure that has Port Multiplier capabilities, such as the SV2000 Storage Appliance. In that case, be sure to disable any hard drive virtualization by setting the external enclosure into JBOD mode. Refer to the documentation for your external storage enclosure for instructions about how to set it into JBOD mode. Also ensure that the latest available version of firmware for the storage enclosure is installed.



SATA Hard Disks connected to each port of a RAID controller



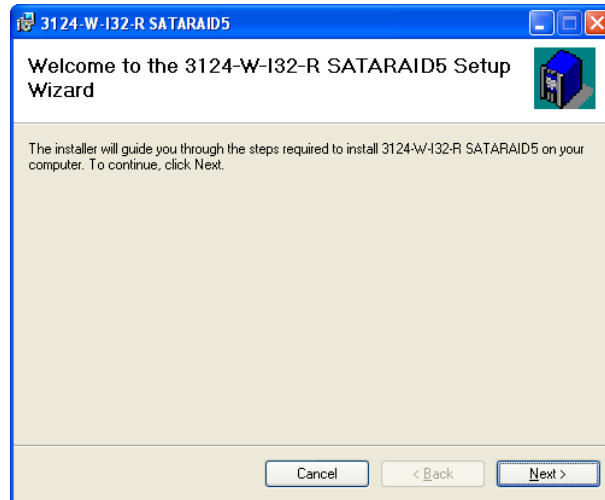
External Storage Enclosure connected to one port of a RAID controller

Install Using the Microsoft Windows Installer

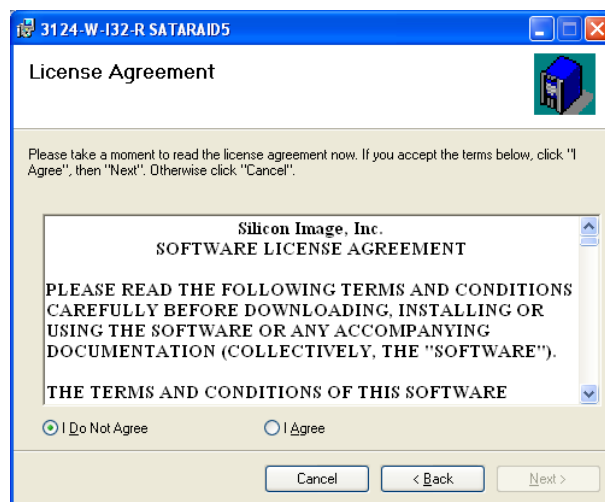
After installing Sil3124 controller and making all of the physical connections, use the following procedure to install the Sil3124 SATARAID5 software onto your computer system.

Note: All of the SATARAID5 installation screens are shown for Windows XP. The frame and buttons may appear slightly different on other versions of Windows.

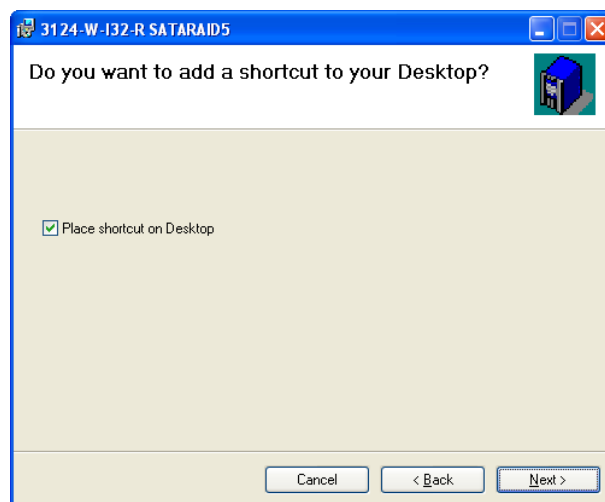
1. Insert the Sil3124 SATARAID5 installation CD into your CD-ROM drive or download the installation package from the Silicon Image website (<http://www.siliconimage.com>)
2. Double-click the **3124-W-I32-R.msi** file (for the 32-bit version) or the **3124-W-I64-R.msi** file (for the 64-bit version) to begin the installation process. The following welcome screen appears:



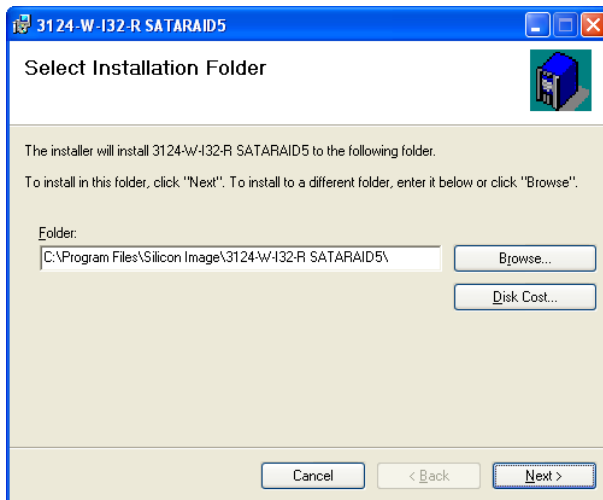
- Click **Next** to pass the welcome screen. The following license agreement screen appears:



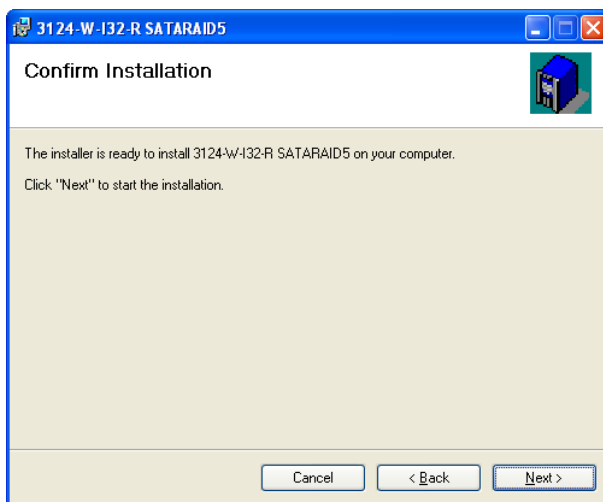
- After reviewing the License Agreement, click the **I Agree** radio button and click **Next**. The following screen appears:



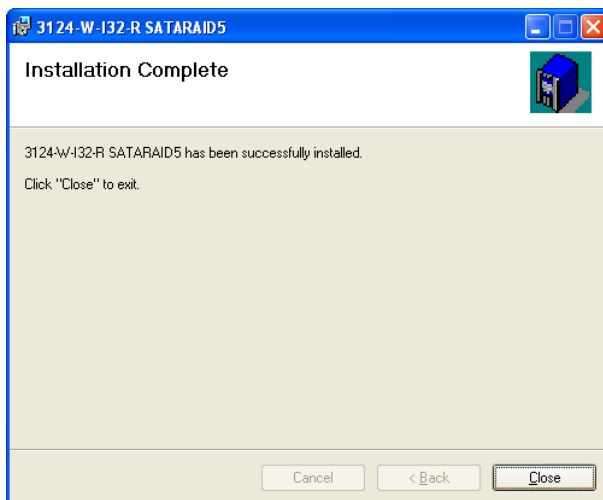
- By default, the installer package will install a shortcut to the SATARAID5 Manager on your Windows desktop. If you do not want the shortcut installed on your desktop, click the checkbox until it is un-checked. Click **Next**, and the following screen appears:



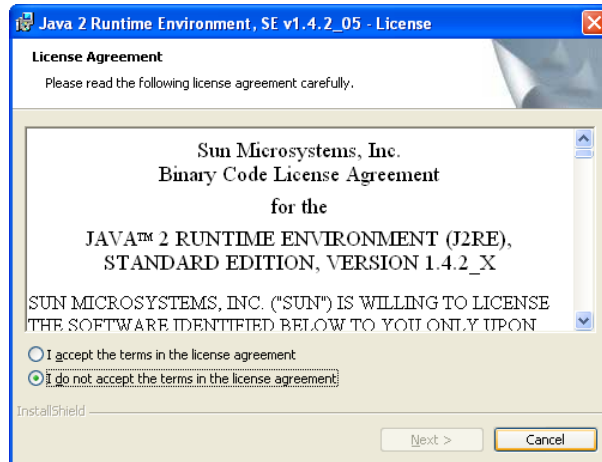
6. To accept the default installation folder (recommended), click **Next** and proceed to Step 7. Otherwise, click **Browse** to select an alternate folder for the installation of the SATA RAID5 software. After confirming the installation folder, the following screen appears:



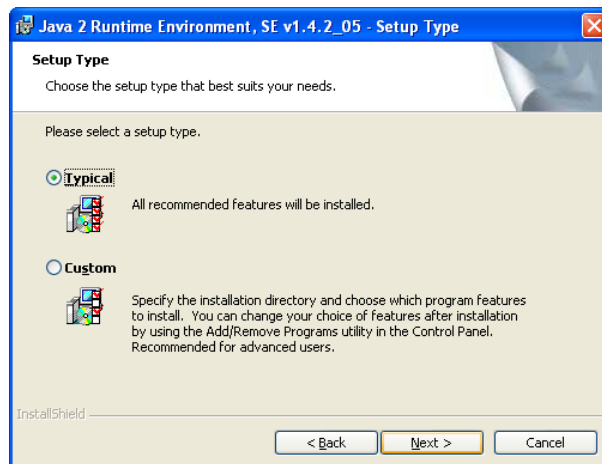
7. Click **Next** to proceed with the installation of the SATA RAID5 Driver and Manager software files into the folder specified above. A screen displays the progress of the installation process. When all of the software files have been successfully installed, the following screen appears:



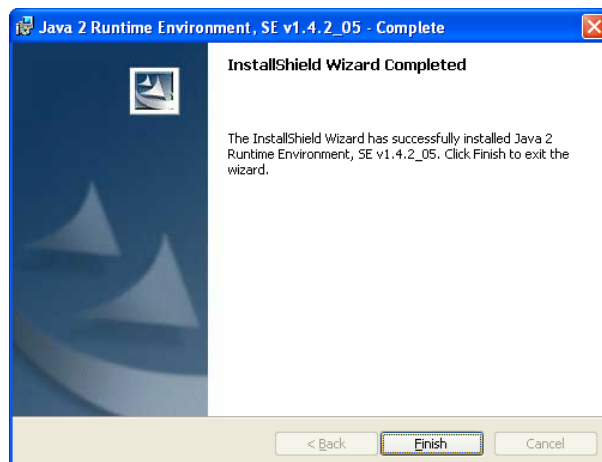
8. Click **Close** to close this screen. If the JAVA Run-Time Environment is already installed on your system, the installation process is complete. Otherwise, the following screen appears:



9. After reviewing the License Agreement, verify that the **I accept the terms in the license agreement** radio button is selected and click **Next**. The following screen appears:



10. Select the **Typical** setup type (recommended) and click **Next**. The following screen appears:



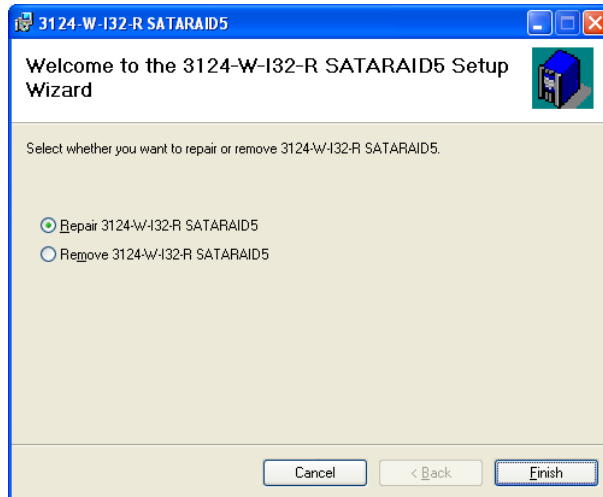
11. When the installation completes, click **Finish**.

The SATARaid5 Manager software is installed into the **Program Files \ Silicon Image** folder. A Windows Service named **"SATARaid5 Configuration Service"** is also installed and started. You can then launch the SATARAID5 Manager by clicking on **Start → All Programs → Silicon Image** and selecting **SATARaid5Manager** or by double-clicking on the Desktop shortcut icon (if it was installed).

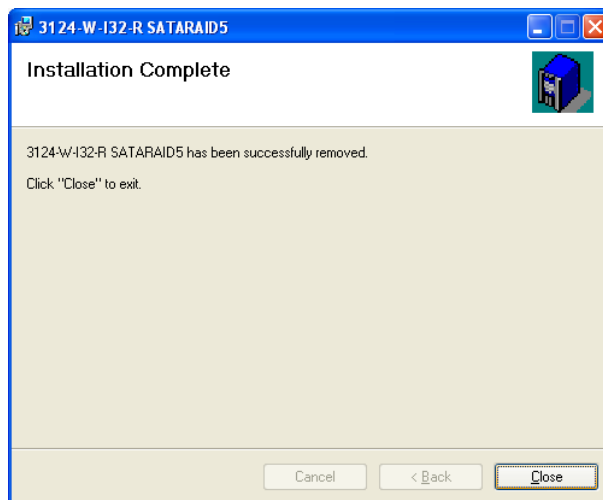
Refer to the SATARAID5 User's Guide for more information about how to create and manage RAID Groups through the SATARAID5 Manager allocate and how to configure partitions using the Windows **Disk Management** utility.

Removing the Software

1. Insert the Sil3124 SATARAID5 Installation CD into your CD-ROM drive or download the installation package from Silicon Image's website.
2. Double-click the **3124-W-I32-R.msi** file (for the 32-bit version) or the **3124-W-I64-R.msi** file (for the 64-bit version) to begin the removal process. The following screen appears:



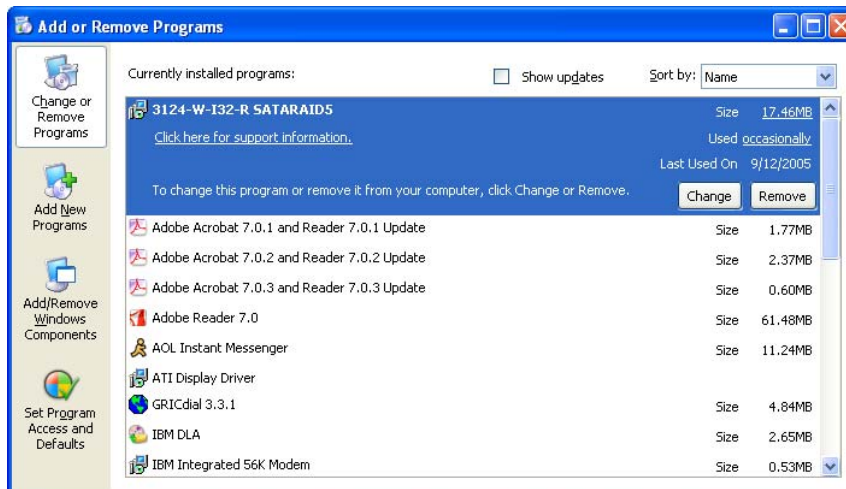
3. Select the **Remove** radio button, and click **Finish**. A screen displays the progress of the software removal process. When the removal process is complete, the following screen appears:



4. Click **Close** to close this dialog box.

Manually Remove Software Using Control Panel

1. Click on the **Start** button, select **Control Panel**, and select **Add or Remove Programs**. The following screen appears:



2. Select the **Sil3124 SATARAID5** program, then click **Remove**. When the confirmation dialog appears, select **Yes** to continue with the removal of the SATARAID5 software components.

Note: This procedure only removes the Sil3124 SATARAID5 Driver and Manager software components from your system. If you also wish to remove the JAVA Run-Time Environment, that program must be removed separately using the above procedure.
