

# LINDY®

## CONNECTION PERFECTION

---

USB 2.0 Link Cable

User Manual

*English*

---



LINDY No. 42815



[www.lindy.com](http://www.lindy.com)

## Introduction

Thank you for purchasing the LINDY USB 2.0 Link Cable! The USB 2.0 Link Cable allows you to easily connect two computers directly via their USB ports and transfer files at great speed.

The USB 2.0 Link Cable can be used in two different ways:

- With Windows Easy Transfer utility to easily transfer data and settings from Windows XP to Windows Vista PCs and between Windows Vista PCs
- With PC Link software to transfer data between Windows ME/2000/XP and Vista PCs

## Package Contents

- LINDY USB 2.0 Link Cable
- Driver CD
- This manual

## Features

- Allows you to quickly and easily backup, copy and transfer data between two PCs
- High speed USB 2.0 connection supports transfer speeds of up to 480Mbps, can also be connected to USB 1.1 ports
- Simple single cable solution - connects to a USB port on each PC
- Supports Windows Vista Easy Transfer
- Connectors: USB Type A Male to USB Type A Male
- Cable length: 2m
- Compatible with Windows ME/2000/XP and Vista

## Windows Easy Transfer

### Installation

Please follow the following instructions to install the USB 2.0 Link Cable for use with Microsoft's Windows Easy Transfer utility, which is used for transferring data from XP to Vista PCs and between Vista PCs.

#### Windows Vista

Simply connect the USB 2.0 Link Cable to the USB ports of your computers and it is ready to use. No further installation is required.

#### Windows XP

Please install the Windows Easy Transfer Software before you connect the USB 2.0 Link Cable to your computers USB port. Follow the steps below to proceed.

### Installing Windows Easy Transfer Utility

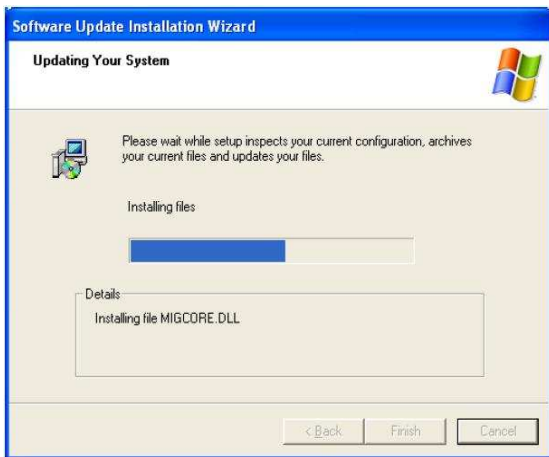
1. Insert the provided CD into your CD-ROM drive. An autorun screen will automatically pop up and guide you to install **Windows Easy Transfer**. Click **Next** to proceed.



2. After reading the license agreement, select **I Agree** and click **Next** to begin the installation.



3. Wait while the installation takes place.



4. Click **Finish** to complete the installation.



Now connect the USB Link to the USB port of your computer. When **Easy Transfer Cable** screen appears, you may select **Transfer files and settings** to launch **Windows Easy Transfer** or select **Take no action** as required.



## Operation

Windows Easy Transfer is a Windows-based utility that allows two computers to transfer files and settings from a computer running Windows XP or Windows Vista to another computer running Windows Vista.

To start the utility:

- Windows Vista: Select **Start > Programs > Accessories > System Tools > Windows Easy Transfer**.
- Windows XP: Select **Start > Programs > Windows Easy Transfer**.

After launching Windows Easy Transfer, simply follow the on-screen instructions. Pay attention to the following notices when you are using the utility:

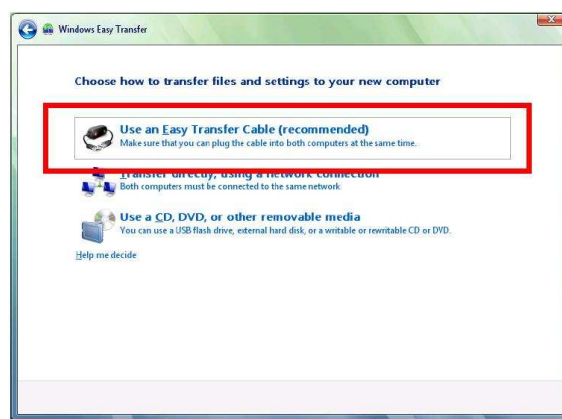
- You must launch Windows Easy Transfer on both computers on which you want to transfer files and settings so that they can detect each other.
- Transfer can only be made from Windows XP/Vista to Windows Vista. You cannot transfer files/settings from Vista to XP.
- When prompted to choose a transferring media, select USB cable.
- You can only transfer files/settings between two operationing systems using the same language. Please check [www.microsoft.com/downloads](http://www.microsoft.com/downloads) to select your language.

Transfer Example:

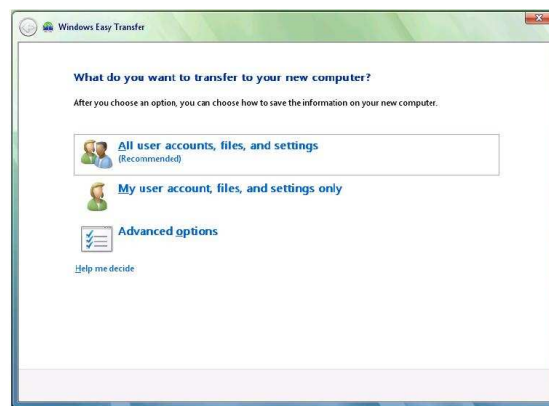
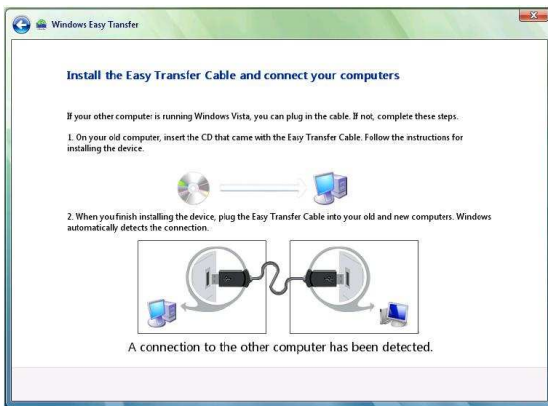
The following example demonstrates how to transfer files from Windows XP to Vista



1. Select **Next**



2. Select **Use an Easy Transfer Cable**



3. Wait until the message:  
**A connection to the other computer has been detected** appears at the bottom.

4. Select the required transfer item.

5. After the data has been transferred, click **Close** to exit the utility.

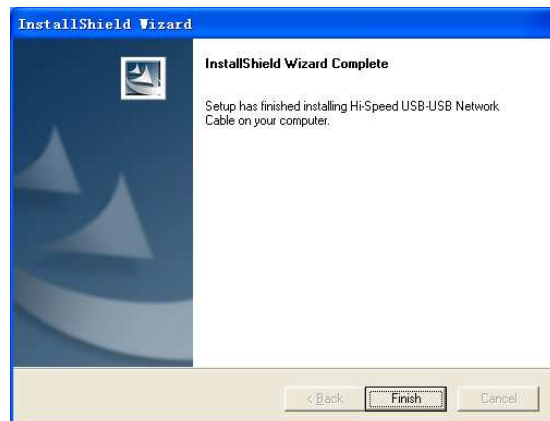
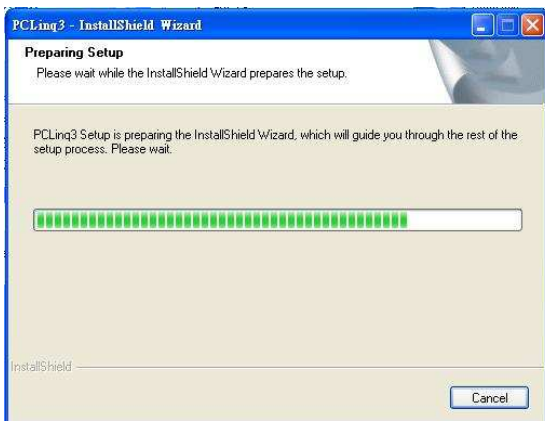
## PC Linq

With PC Linq software you can transfer data between Windows ME/2000/XP and Vista PCs by simply dragging and dropping!

### Installation

Please install the PC Linq Tool before you connect the USB 2.0 Link Cable to your computers USB port. Follow the steps below to proceed.

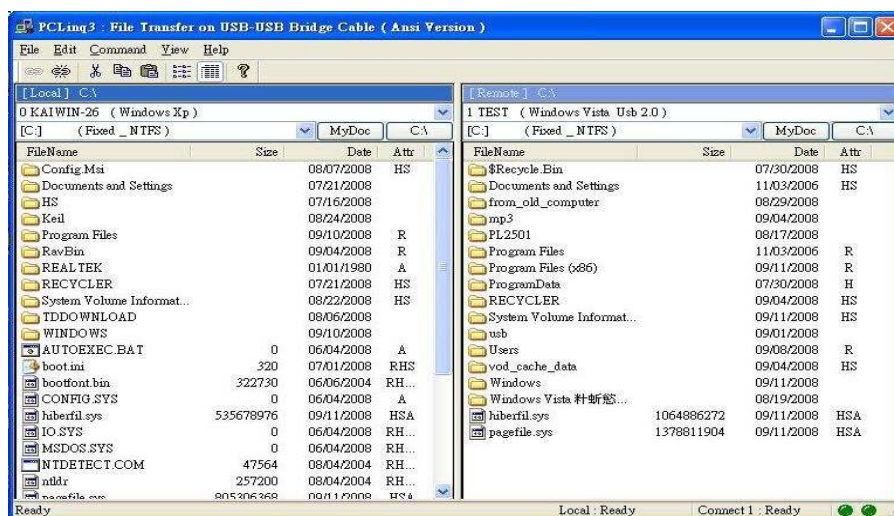
1. Insert the provided CD into your CD-ROM drive.
2. Please install the application program **PCLinq3\_Generic\_3003** on to both of your two computers.
3. Run the install shield Wizard- PCLinq3\_Generic\_3003 in CD until the setup is finished.



4. Now plug the USB 2.0 Link into the USB ports of your two computers and the installation is complete.

### Operation

1. Open the PCLinq software by selecting **Start > Programs > PCLinq3**, you will see the screen below



2. Documents can now be transferred between two computers by dragging and dropping from one computer to the other.



## ***Radio Frequency Energy, Certifications***

---

### **CE Certification**

This equipment complies with the requirements relating to electromagnetic compatibility, EN 55024 and EN55022 class A for ITE, EN61000-3-2/-3 the essential protection requirement of Council Directive 89/336/EEC on the approximation of the laws of the Member States relating to electromagnetic compatibility.

Shielded cables must be used with this equipment to maintain compliance with radio frequency energy emission regulations and ensure a suitably high level of immunity to electromagnetic disturbances.

### **FCC Warning**

This equipment has been tested and found to comply with the limits for a Class B digital device, pursuant to part 15 of the FCC Rules. These limits are designed to provide reasonable protection against harmful interference in a residential installation.

This equipment generates, uses, and can radiate radio frequency energy and, if not installed and used in accordance with the instructions, may cause harmful interference to radio communications. However, there is no guarantee that interference will not occur in a particular installation. If this equipment does cause harmful interference to radio or television reception, which can be determined by turning the equipment off and on, the user is encouraged to try to correct the interference by one or more of the following measures:

- Reorient or relocate the receiving antenna
- Increase the separation between the equipment and receiver
- Connect the equipment into an outlet on a circuit different from that to which the receiver is connected
- Consult the dealer or an experienced technician for help

You are cautioned that changes or modification not expressly approved by the party responsible for compliance could void your authority to operate the equipment.

This device complies with part 15 of the FCC Rules.

Operation is subject to the following two conditions:

1. This device may not cause harmful interference, and
2. This device must accept any interference received, including interference that may cause undesired operation.



### **WEEE (Waste of Electrical and Electronic Equipment), Recycling of Electronic Products**

#### **United Kingdom**

In 2006 the European Union introduced regulations (WEEE) for the collection and recycling of all waste electrical and electronic equipment. It is no longer allowable to simply throw away electrical and electronic equipment. Instead, these products must enter the recycling process. Each individual EU member state has implemented the WEEE regulations into national law in slightly different ways. Please follow your national law when you want to dispose of any electrical or electronic products. More details can be obtained from your national WEEE recycling agency.

#### **Germany / Deutschland**

Die Europäische Union hat mit der WEEE Direktive umfassende Regelungen für die Verschrottung und das Recycling von Elektro- und Elektronikprodukten geschaffen. Diese wurden von der Bundesregierung im Elektro- und Elektronikgerätegesetz – ElektroG in deutsches Recht umgesetzt. Dieses Gesetz verbietet vom 24.März 2006 an das Entsorgen von entsprechenden, auch alten, Elektro- und Elektronikgeräten über die Hausmülltonne! Diese Geräte müssen den lokalen Sammelsystemen bzw. örtlichen Sammelstellen zugeführt werden! Dort werden sie kostenlos entgegen genommen. Die Kosten für den weiteren Recyclingprozess übernimmt die Gesamtheit der Gerätehersteller.

#### **France**

En 2006, l'union Européenne a introduit la nouvelle réglementation (DEEE) pour le recyclage de tout équipement électrique et électronique.

Chaque Etat membre de l' Union Européenne a mis en application la nouvelle réglementation DEEE de manières légèrement différentes. Veuillez suivre le décret d'application correspondant à l'élimination des déchets électriques ou électroniques de votre pays.

#### **Italy**

Nel 2006 l'unione europea ha introdotto regolamentazioni (WEEE) per la raccolta e il riciclo di apparecchi elettrici ed elettronici. Non è più consentito semplicemente gettare queste apparecchiature, devono essere riciclate. Ogni stato membro dell' EU ha tramutato le direttive WEEE in leggi statali in varie misure. Fare riferimento alle leggi del proprio Stato quando si dispone di un apparecchio elettrico o elettronico.

Per ulteriori dettagli fare riferimento alla direttiva WEEE sul riciclaggio del proprio Stato.



LINDY No. 42815

1<sup>st</sup> Edition, October 2008

[www.lindy.com](http://www.lindy.com)

---