

LINDY®

COMPUTER CONNECTION TECHNOLOGY

USB 2.0 Card Reader Panels

User Manual

English



LINDY No. 42896
LINDY No. 42897

5.25" Card Reader Panel
3.5" Card Reader Panel



www.lindy.com



Installation Instructions 5.25" Card Reader Panel (No. 42896)

Software Installation

Users of Windows XP/ME/2000(SP3) **DO NOT need to install drivers.** Windows will automatically provide a USB 2.0 device driver for the card reader.

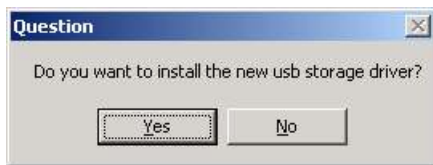
Win 98SE/2000 users need to install the software using the supplied CD. Please install the software before fitting the card reader into your computer. Insert the CD and follow the on screen instructions as below:

Step 1

Select the correct driver for your operating system – Windows 98 or Windows 2000.

Step 2

When prompted click **Yes** to install the driver:



Step 3

Once the driver has installed, the following box will appear: Click **OK** to complete the installation



Hardware Installation

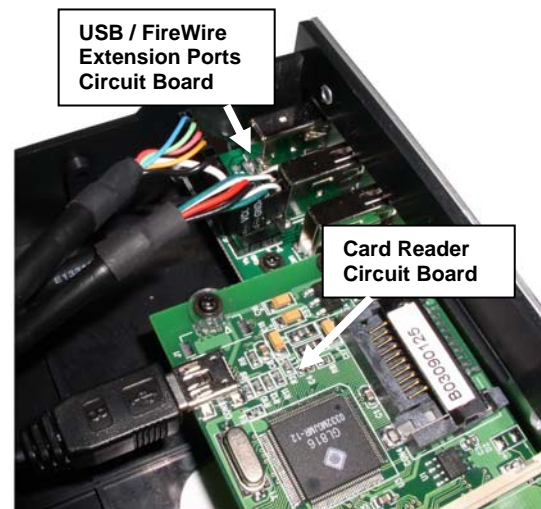
Note: We recommend you use anti-static precautions when installing the card reader

Step 1

Connect the supplied cables to the connectors in the card reader assembly. The mini-USB connector plugs into the connector on the card reader circuit board and the FireWire and Type A USB extension cables install onto the connector pins on the USB/FireWire Extension circuit board.

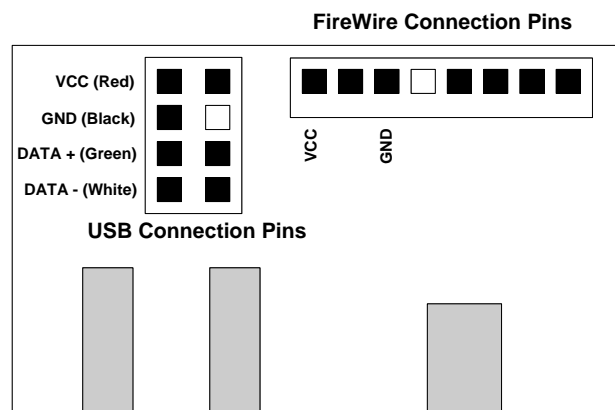
The USB cables attach to the motherboard and the card reader using the coloured wires identified in this table:

Colour	Signal
Red	VCC
White	DATA -
Green	DATA +
Black	GND (VCC-)



CAUTION: To avoid damaging the card reader you must ensure the VCC, DATA+, DATA- and GND wires connect to the correct pins.

The diagram to the right, illustrates the pin layout of the USB and FireWire connectors on the USB/FireWire Extension Ports circuit board



Step 2

Switch off your computer, and unplug from the mains. Remove the case cover and install the card reader assembly into a spare 5.25" bay in your computer

Step 3

Secure the card reader using the supplied screws

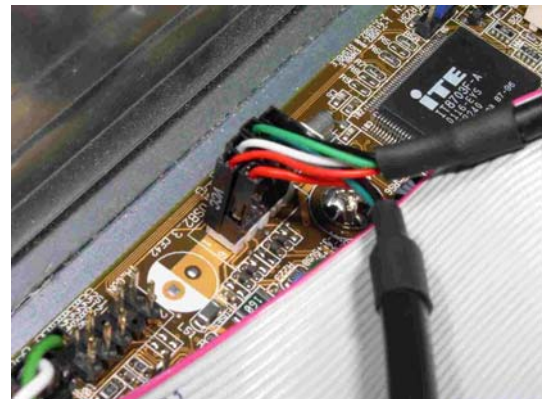


Step 4

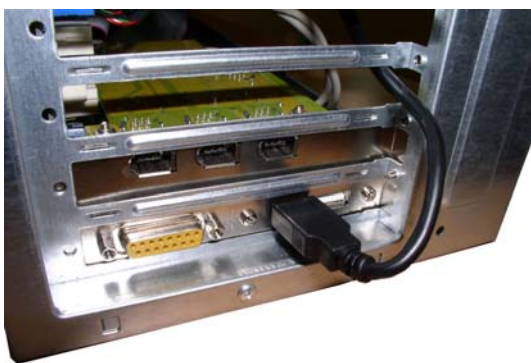
Next, connect the USB cables from the card reader circuit board and USB extension port circuit board to a USB pin header on your motherboard or USB add-on card. (Check the manual that came with your motherboard / USB card to locate the USB pin header)

The four pin connectors from the card reader install onto the pin header using the wires identified in this table:

Colour	Signal
Red	VCC
White	DATA -
Green	DATA +
Black	GND (VCC-)



CAUTION: To avoid possible damage to your hardware you must ensure that the VCC, DATA+, DATA- and GND wires connect to the correct pins on the pin header. Consult your motherboard / USB add-on card manual to identify the correct pin assignment.



Step 5

Connect the Type A USB Male connector from the USB Extension port to a spare internal USB Female socket on your motherboard or add-on card.

If no internal connection is available you can route the USB cable through the back of the computer to an external port (see picture)

Step 6

Connect the FireWire connector from the FireWire extension port circuit board to an internal FireWire socket on your motherboard or add-on card (see picture).

If no internal connection is available you can route the FireWire cable through the back of the computer to an external port.

Replace the case cover and power up your computer. Windows will detect the Card Reader panel and automatically install the drivers.



Software Installation

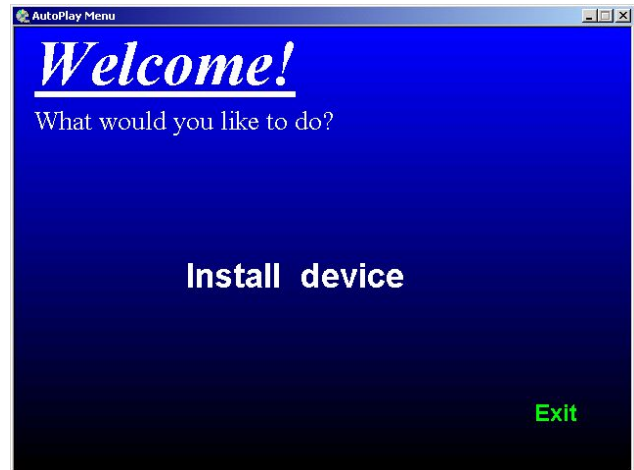
Win 98SE/ME/2000/XP users need to install the software using the supplied CD. Please install the software before fitting the card reader in your computer. Insert the CD and follow the on screen instructions as below:

Step 1

After the Welcome menu appears click **Install device** to begin.

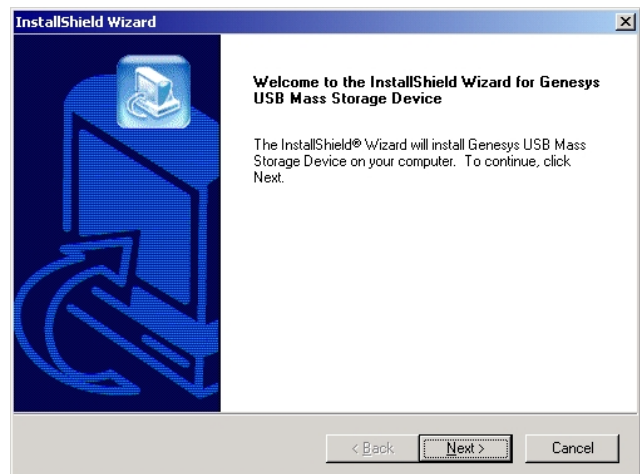
Step 2

Choose your preferred language from the drop-down list and then click **OK**.



Step 3

Click **NEXT** to install the USB Mass Storage Device



Step 4

Click **Finish** to complete the software installation



Hardware Installation

Note: We recommend you use anti-static precautions when installing the card reader

Step 1

Connect the supplied USB internal cable to the connector on the Card Reader

Step 2

Switch off your computer, and unplug from the mains. Remove the case cover and install the card reader assembly into a spare 3.5" bay in your computer



Step 3

Secure the card reader using the supplied screws



Step 4

Next, connect the USB cable from the card reader circuit board to a USB pin header on your motherboard or USB add-on card. (Check the manual that came with your motherboard / USB card to locate the USB pin header)

The four pin connectors from the card reader install onto the pin header using the wires identified in this table:



Colour	Signal
Red	VCC +
White	DATA -
Green	DATA +
Black	VCC- (GND)

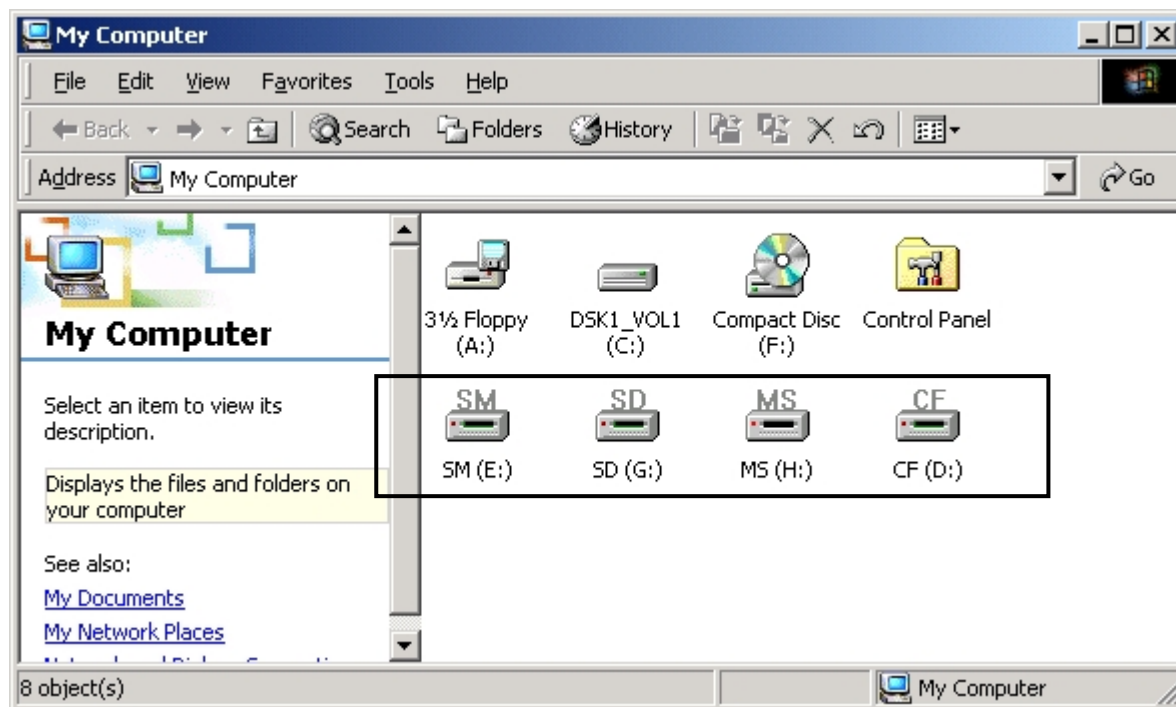
CAUTION: To avoid possible damage to your hardware you must ensure that the VCC+, DATA+, DATA- and VCC- (GND) wires connect to the correct pins on the pin header. Consult your motherboard / USB add-on card manual to identify the correct pin assignment.

Replace the case cover and power up your computer. Windows will detect the Card Reader panel and automatically install the drivers.

Using the Card Reader

The first time you power up your computer after you have installed the Card Reader, Windows will automatically detect and install the relevant drivers.

Once this process is complete you can begin using your Card Reader!



Windows identifies each different memory card slot in the Card Reader as a removable drive. Simply insert your memory card into the slot and access the data in the same way you would a regular hard drive!

Shielded cables must be used with this equipment to maintain compliance with radio frequency energy emission regulations and ensure a suitably high level of immunity to electromagnetic disturbances.

FCC Warning

This equipment has been tested and found to comply with the limits for a Class B Digital device, pursuant to part 15 of the FCC Rules. These limits are designed to provide reasonable protection against harmful interference in a residential installation. This equipment generates, uses, and can radiate radio frequency energy and, if not installed and used in accordance with the instructions, may cause harmful interference to radio communications. However, there is no guarantee that interference will not occur in a particular installation. If this equipment does cause harmful interference to radio or television reception, which can be determined by turning the equipment off and on, the user is encouraged to try to correct the interference by one or more of the following measures:

- Reorient or relocate the receiving antenna
- Increase the separation between the equipment and receiver
- Connect the equipment into an outlet on a circuit different from that to which the receiver is connected
- Consult the dealer or an experienced radio/TV technician for help

You are cautioned that changes or modifications not expressly approved by the party responsible for compliance could void your authority to operate the equipment.

This device complies with part 15 of the FCC Rules.

Operation is subject to the following two conditions:

1. This device may not cause harmful interference, and
2. This device must accept any interference received, including interference that may cause undesired operation



For Home and Office Use
Tested to comply
with FCC Standards