

# LINDY®

## CONNECTION PERFECTION

### Smart Card Reader Express Card



No.51541

[www.lindy.com](http://www.lindy.com)

Tested to Comply with FCC Standards  
For Home and Office Use!

© LINDY ELECTRONIC S LIMITED & LINDY-ELEKTRONIK GMBH - FIRST EDITION (JUNE 2011)

## User Manual

### Introduction

Thank you for purchasing the LINDY ExpressCard Smart Card Reader which reads and edits the data from your smart cards. It provides smart card security for all types of ISO7816 compatible cards, e.g. home banking, network security, secure logon, email encryption, online gaming etc.

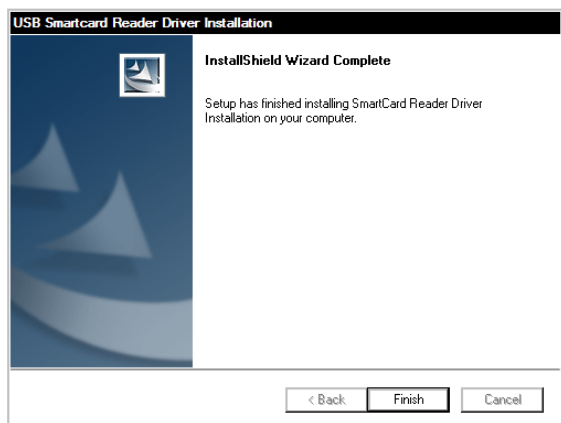
### Features

- Suitable for an Express Card 34 slot, or using the supplied adapter, for an ExpressCard 54 Slot
- Compliant with EMV specification
- Universal Serial Bus Specification, version 1.1 / 2.0.
- PC Smart Card industry standard – PC / SC 1.0
- Supports CT-API
- US Federal Information Processing Standards (FIPS) Publ. 201 requirements on smart card reader interoperability, Includes WDM driver to work on Windows 98 and Windows 2000
- Support T0, T1 protocol, I2C memory card, SLE4418, SLE4428, SLE4432, SLE4442, AT88SC1608 and AT45D041 card
- Compatible with Microsoft USB-CCID driver
- Supports 3V / 5V cards
- Compatible with Win 2000 / XP / Vista / 7, Mac OS 10.2.4 and above

## User Manual

### Installation

1. Turn on the computer.
2. Insert the ExpressCard in to an available slot in your PC, when the hardware is fully inserted, the system will automatically detect the new hardware. Please click **Cancel**.
3. Double click **setup.exe** file on the supplied CD-ROM.
4. Once the setup file has run the driver is installed, click **Finish** and restart the computer.



## User Manual

For notebooks with ExpressCard/54 slot, please use the enclosed adapter, which helps prevent the ExpressCard from moving around in the slot.



User Manual

Press the black plastic cap of the inserted ExpressCard once.

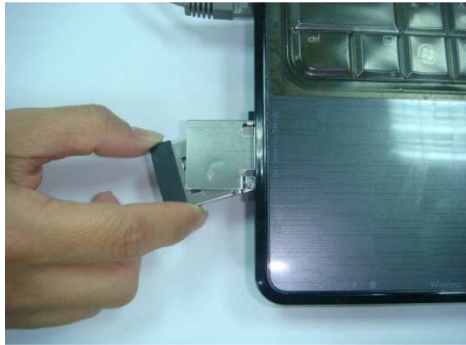


Pull out this part as shown below.



User Manual

Then, holding the plastic cap, rotate it 90 degrees in accordance with the direction of the arrow, as shown in the images below.



User Manual

Finally insert the smart card into the ExpressCard slot.



If the smart card reader is not in use, you can push it back inside the ExpressCard slot. Simply rotate it 90 degrees in the opposite direction to the arrow



User Manual

Then push the plastic cap back into the ExpressCard slot



## Recycling Information



### WEEE (Waste of Electrical and Electronic Equipment), Recycling of Electronic Products

In 2006 the European Union introduced regulations (WEEE) for the collection and recycling of all waste electrical and electronic equipment. It is no longer allowable to simply throw away electrical and electronic equipment. Instead, these products must enter the recycling process.

Each individual EU member state has implemented the WEEE regulations into national law in slightly different ways. Please follow your national law when you want to dispose of any electrical or electronic products. More details can be obtained from your national WEEE recycling agency.

#### Germany - Deutschland

Die Europäische Union hat mit der WEEE Direktive umfassende Regelungen für die Verschrottung und das Recycling von Elektro- und Elektronikprodukten geschaffen. Diese wurden im Elektro- und Elektronikgerätegesetz - ElektroG in deutsches Recht umgesetzt. Dieses Gesetz verbietet das Entsorgen von entsprechenden, auch alten, Elektro- und Elektronikgeräten über die Hausmülltonne! Diese Geräte müssen den lokalen Sammelsystemen bzw. örtlichen Sammelstellen zugeführt werden! Dort werden sie kostenlos entgegen genommen. Die Kosten für den weiteren Recyclingprozess übernimmt die Gesamtheit der Gerätehersteller.

#### France

En 2006, l'union Européenne a introduit la nouvelle réglementation (DEEE) pour le recyclage de tout équipement électrique et électronique.

Chaque Etat membre de l' Union Européenne a mis en application la nouvelle réglementation DEEE de manières légèrement différentes. Veuillez suivre le décret d'application correspondant à l'élimination des déchets électriques ou électroniques de votre pays.

#### Italy

Nel 2006 l'unione europea ha introdotto regolamentazioni (WEEE) per la raccolta e il riciclo di apparecchi elettrici ed elettronici. Non è più consentito semplicemente gettare queste apparecchiature, devono essere riciclate. Ogni stato membro dell' EU ha tramutato le direttive WEEE in leggi statali in varie misure. Fare riferimento alle leggi del proprio Stato quando si dispone di un apparecchio elettrico o elettronico.

Per ulteriori dettagli fare riferimento alla direttiva WEEE sul riciclaggio del proprio Stato.

## FCC Statement

### FCC Warning

This device complies with part 15 of the FCC Rules. Operation is subject to the following two conditions:

1. This device may not cause harmful interference, and
2. This device must accept any interference received, including interference that may cause undesired operation.

### CE Certification

This equipment complies with the requirements relating to electromagnetic compatibility, EN55022/EN55024 class B for Information Technology Equipment according to the Council Directive 89/336/EEC on the approximation of the laws of the Member States relating to electromagnetic compatibility.

### Germany – Deutschland – LINDY Herstellergarantie

LINDY gewährt für dieses Produkt über die gesetzliche Regelung hinaus eine zweijährige Herstellergarantie ab Kaufdatum. Die detaillierten Bedingungen dieser Garantie finden Sie auf der LINDY Website aufgelistet bei den AGBs.



For Home and Office Use  
Tested to Comply with  
FCC Standards

**LINDY No.51541**

**www.lindy.com**

First Edition JUNE 2011