

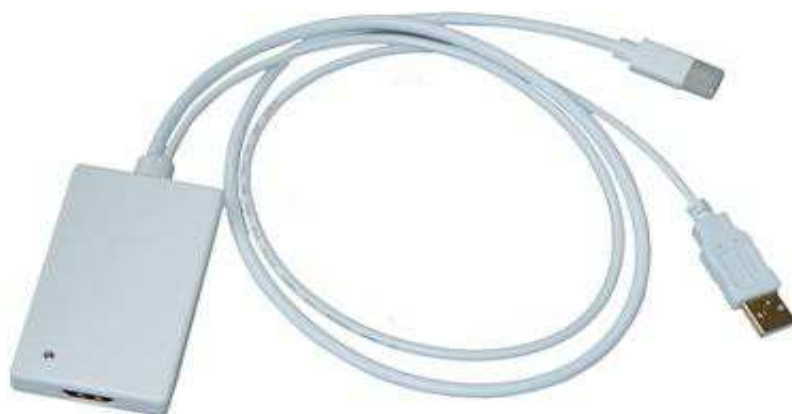
LINDY®

CONNECTION PERFECTION

Mini DP + USB to HDMI Adapter

Manual

English



LINDY No. 41037

www.lindy.com



User Manual

Introduction

Thank you for purchasing the LINDY Mini DisplayPort with USB to HDMI Adapter. This adapter integrates your Mini DisplayPort video signal and audio from a USB port into a HDMI output. Using only the power from a USB port you can enjoy perfect image and sound reproduction on your HDTV.

Features

- Supports Mini DisplayPort 1.1a input, USB 2.0 input and HDMI output
- Works by integrating mini DisplayPort video source and a USB audio source into a HDMI output
- Powered from your Mini DisplayPort and a USB Port
- Supports HDMI 225MHz/2.25Gbps per channel (up to 6.75 Gbps) bandwidth
- Supports HDMI resolution up to 1080p
- Supports HDMI 12 bit per channel (up to 36 bit) deep colour
- Supports uncompressed 2 channel audio such as LPCM

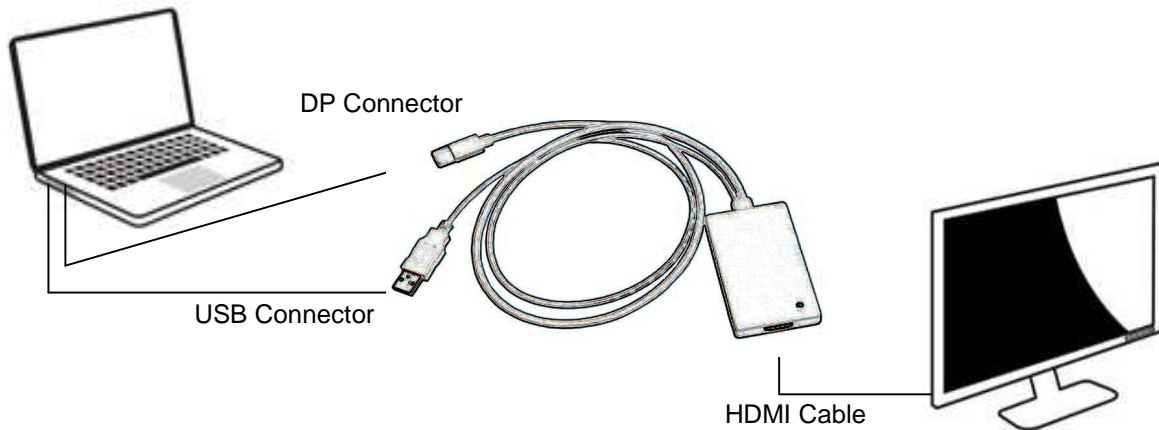
Specifications

- Signal Inputs
 - Video Signal: Mini DisplayPort
 - Audio Signal: 2CH LPCM (Linear Pulse Code Modulation)
- Signal Output
 - Audio/Video: HDMI
- Input Connectors
 - Video: Mini DisplayPort Male 20pin
 - Audio: USB 2.0 type A Male
- Output Connector
 - Audio/Video: HDMI Female Type A 19pin
- Operating Frequency
 - Vertical Frequency Range: 50/60Hz
 - Video Amplifier Bandwidth: 2.25Gbps/225MHz
- Resolutions(HDTV): 480p, 720p, 1080i & 1080p
- Operating Temperature: 0° to +70°
- Operating Humidity: 10% to 85% (no condensation)
- Storage Temperature: -10° to +80°
- Storage Humidity: 5% to 90% (no condensation)
- External Power Supply: No external power required
- Power consumption (Max): 2W

User Manual

Connection

Connect the DisplayPort adapter to your Macbook as shown below. Use a male to male HDMI Cable (max 5m) to connect the adapter to your HDTV.



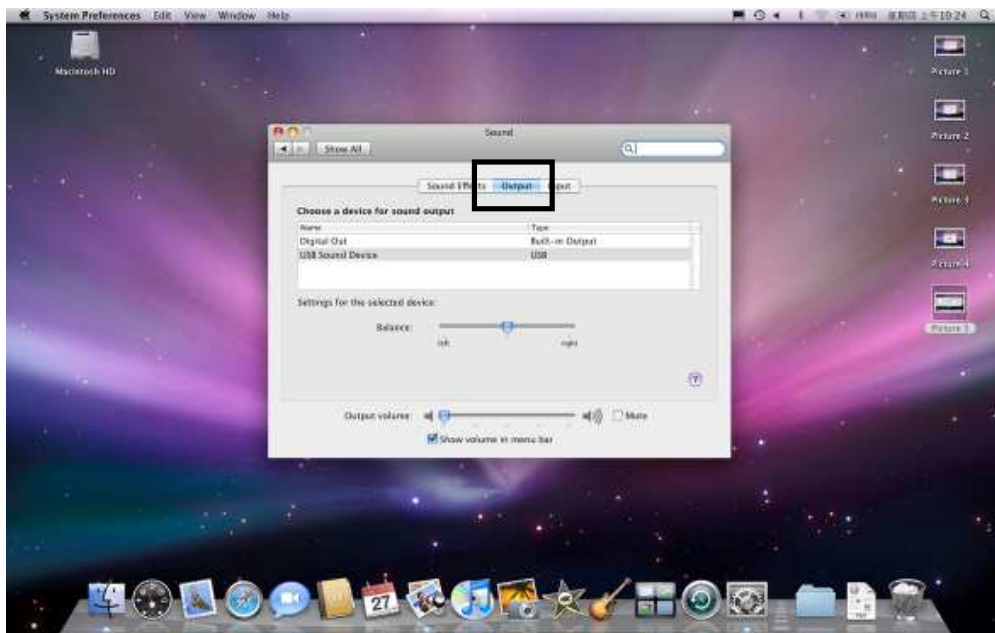
Operation

1. Click "System Preferences" and the following screen will appear.

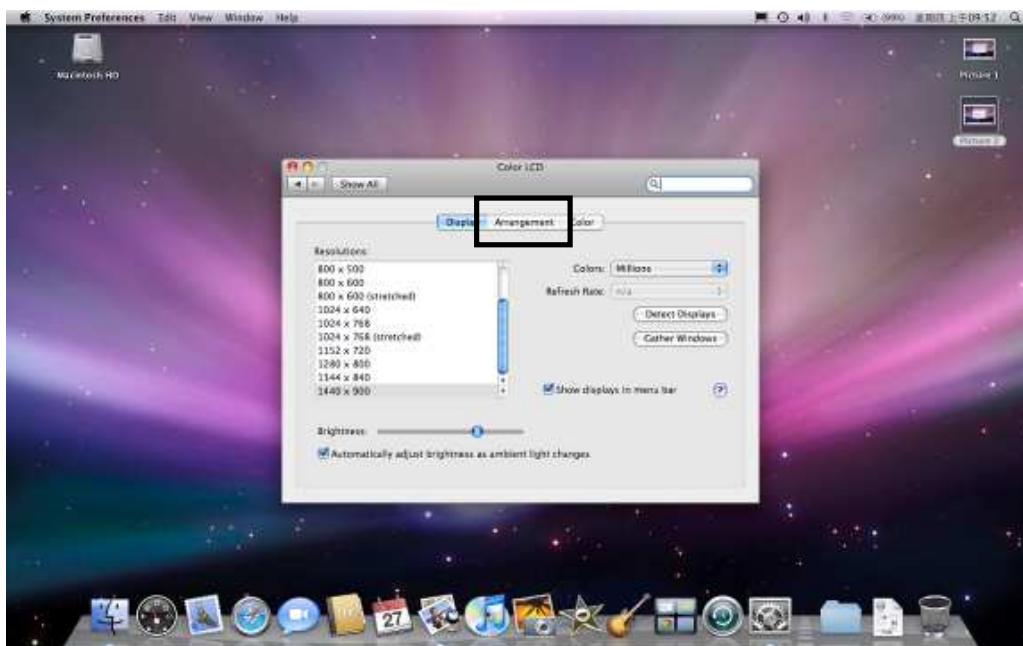


2. Click on the "Sound" icon and the following screen will appear. On the "Output" tab select "USB Sound Device" and this will allow the sound to output through the USB Port.

User Manual

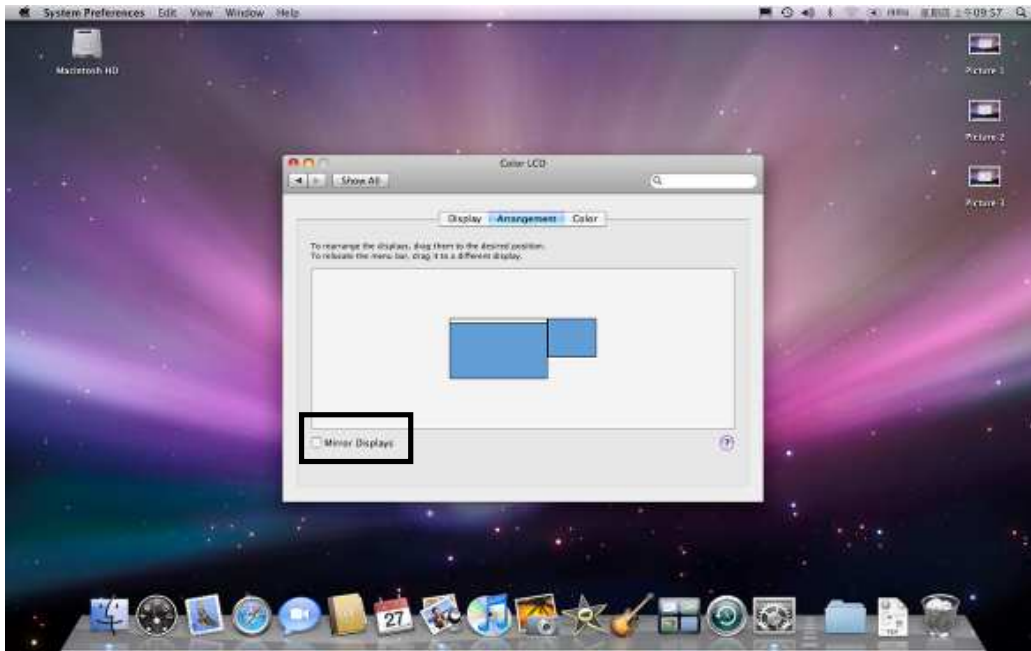


3. Select "Displays" from the "System Preferences" screen and the following box will appear.

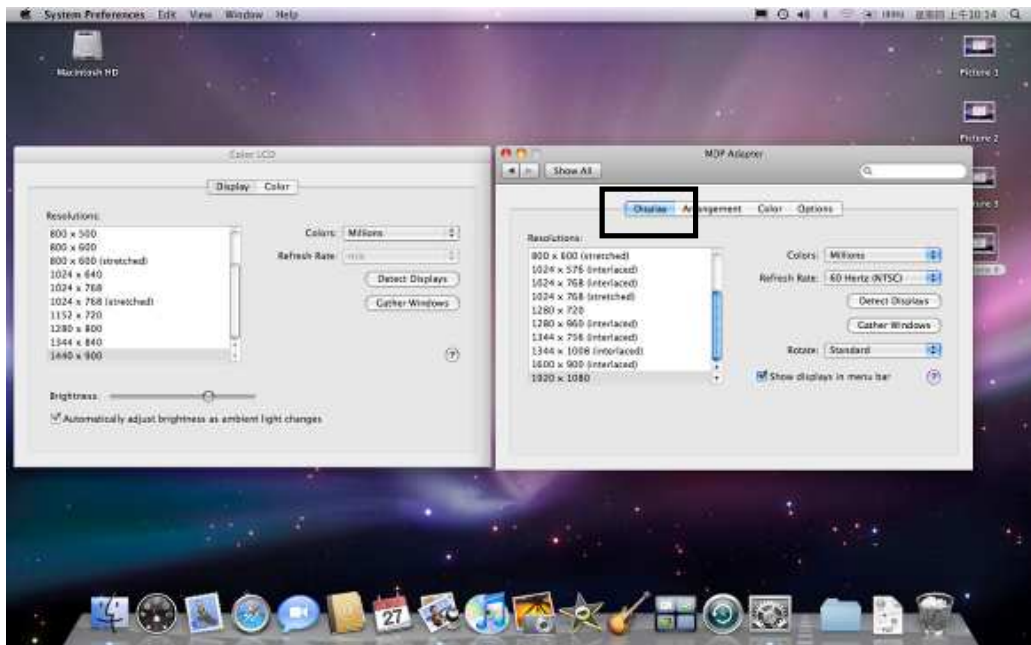


4. Select "arrangement" and choose "Mirror Displays" to show the same screen on both your Macbook and your HDTV.

User Manual



5. Select the "Display" tab to adjust the resolution on your Macbook.



CE & Recycling Information

CE Certification

This equipment complies with the requirements relating to electromagnetic compatibility, EN55022/EN55024 class B for IEC/EN61000-4-2/3 the essential protection requirement of Council Directive 89/336/EEC on the approximation of the laws of the Member States relating to electromagnetic compatibility.



WEEE (Waste of Electrical and Electronic Equipment), Recycling of Electronic Products

United Kingdom

In 2006 the European Union introduced regulations (WEEE) for the collection and recycling of all waste electrical and electronic equipment. It is no longer allowable to simply throw away electrical and electronic equipment. Instead, these products must enter the recycling process.

Each individual EU member state has implemented the WEEE regulations into national law in slightly different ways. Please follow your national law when you want to dispose of any electrical or electronic products. More details can be obtained from your national WEEE recycling agency.

Germany

Die Europäische Union hat mit der WEEE Richtlinie umfassende Regelungen für die Verschrottung und das Recycling von Elektro- und Elektronikprodukten geschaffen. Diese wurden von der Bundesregierung im Elektro- und Elektronikgerätegesetz – ElektroG in deutsches Recht umgesetzt. Dieses Gesetz verbietet vom 24. März 2006 an das Entsorgen von entsprechenden, auch alten, Elektro- und Elektronikgeräten über die Hausmülltonne! Diese Geräte müssen den lokalen Sammelsystemen bzw. örtlichen Sammelstellen zugeführt werden! Dort werden sie kostenlos entgegen genommen. Die Kosten für den weiteren Recyclingprozess übernimmt die Gesamtheit der Gerätehersteller.

France

En 2006, l'union Européenne a introduit la nouvelle réglementation (DEEE) pour le recyclage de tout équipement électrique et électronique.

Chaque État membre de l' Union Européenne a mis en application la nouvelle réglementation DEEE de manières légèrement différentes. Veuillez suivre le décret d'application correspondant à l'élimination des déchets électriques ou électroniques de votre pays.

Italy

Nel 2006 l'unione europea ha introdotto regolamentazioni (WEEE) per la raccolta e il riciclo di apparecchi elettrici ed elettronici. Non è più consentito semplicemente gettare queste apparecchiature, devono essere riciclate. Ogni stato membro dell' EU ha tramutato le direttive WEEE in leggi statali in varie misure. Fare riferimento alle leggi del proprio Stato quando si dispone di un apparecchio elettrico o elettronico.

Per ulteriori dettagli fare riferimento alla direttiva WEEE sul riciclaggio del proprio Stato.

LINDY No. 41037

2nd Edition August 2012

www.lindy.com

