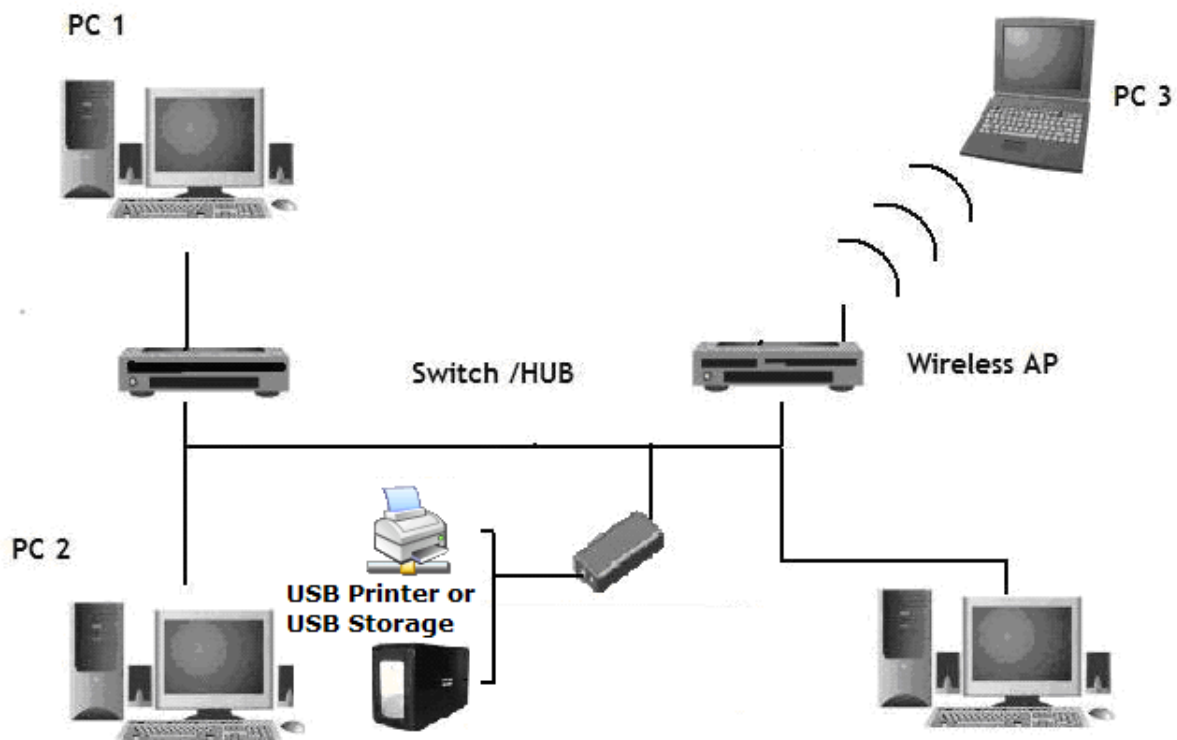


USB Networking Server User's Manual

INDEX

1. Product features	P2
2. Hardware installations	P2
3. Driver installation	P2
4. How to install "Network Printer Wizard" for connection with an USB Printer	P2
5. How to use "Network Printer Wizard" to connect your printer	P4
6. How to install Rally Utility for connection with USB Storage Device	P8
7. USB Networking Server Configuration via web	P16
8. USB Networking Server Management	P20



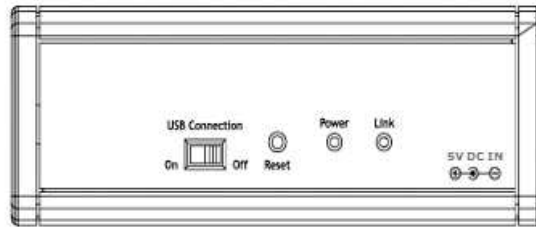
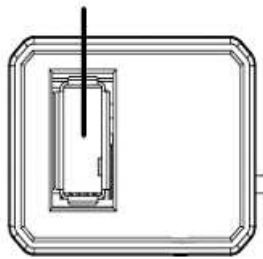
1. Product features

- Work with USB printer or USB storage device and turn it to network shared device. **(The connected device named as Rally Network Device here)**
- Support USB1.1/USB2.0 (Hi-speed) specification.
- Support 802.3/3u transceiver, compliant with 100BASETX and 10BASE-T PMD level standards.
- Supports LED indicators for Ethernet connection.
- Supports majority Ethernet protocols TCP/IP, WSD, UPnP
- Support Windows XP, Vista, 7

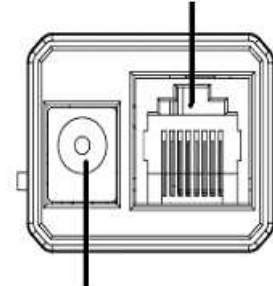
2. Hardware installations

2.1 For 1-port USB networking server

Connect USB Cable to USB Printer or USB Storage device.

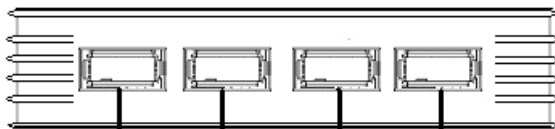


Connect LAN cable to LAN Switch or Router

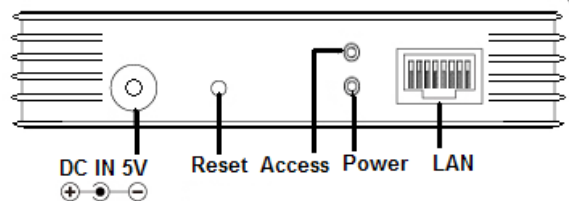


Connect to 5V/0.5A power adapter

- For 4-port USB networking server



Connect USB cable to USB printer or USB storage device .



3. Driver installation

Depending on the device you connect (USB Printer or USB Storage) with USB Networking Server; you will need to install proper Utility Driver.

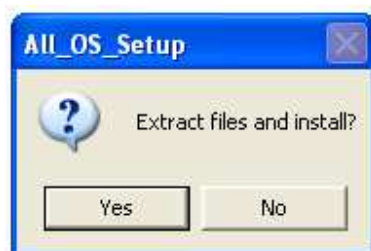
4. How to install "Network Printer Wizard" for connection with an USB Printer

4.1 Connect your printer USB cable to USB Networking Server to a LAN Switch.

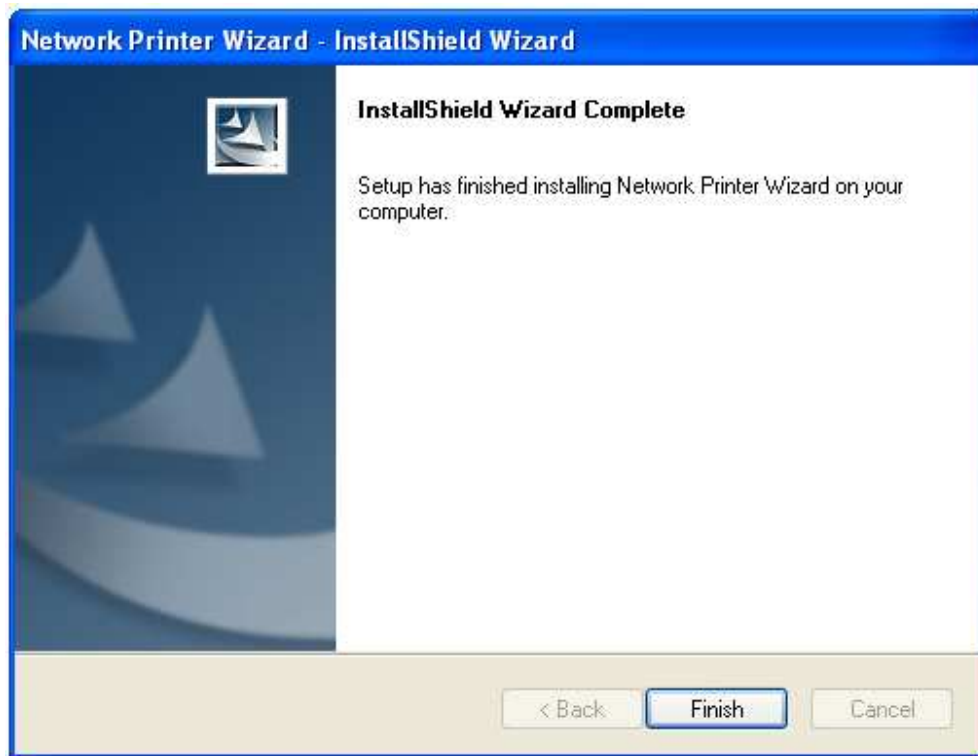
4.2 Insert CD-Rom in to your computer, and run "Install Network Printer".

- 
- Install Rally USB Server
 - **Install Network Printer**
 - Install SyncQuick Backup
 - User's Manual
 - Browse CD
 - Exit
- 

4.3 Click on "Yes".



4.4 Click "Finish" to complete.



4.5 A "Network Printer Wizard" icon is shown on the desktop.



5. How to use "Network Printer Wizard" to connect your printer

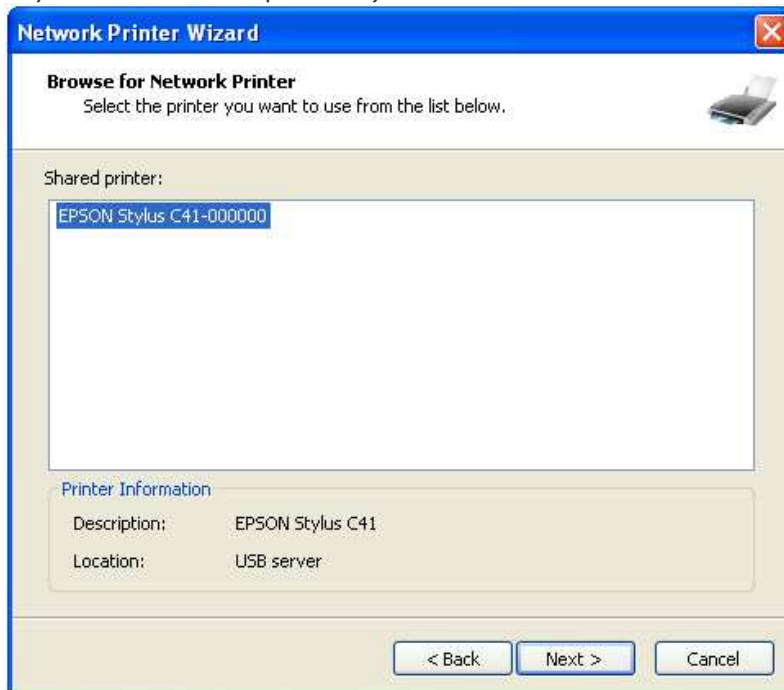
5.1 Install the USB printer in to USB server and click "**Network Printer Wizard**" icon to run the program.



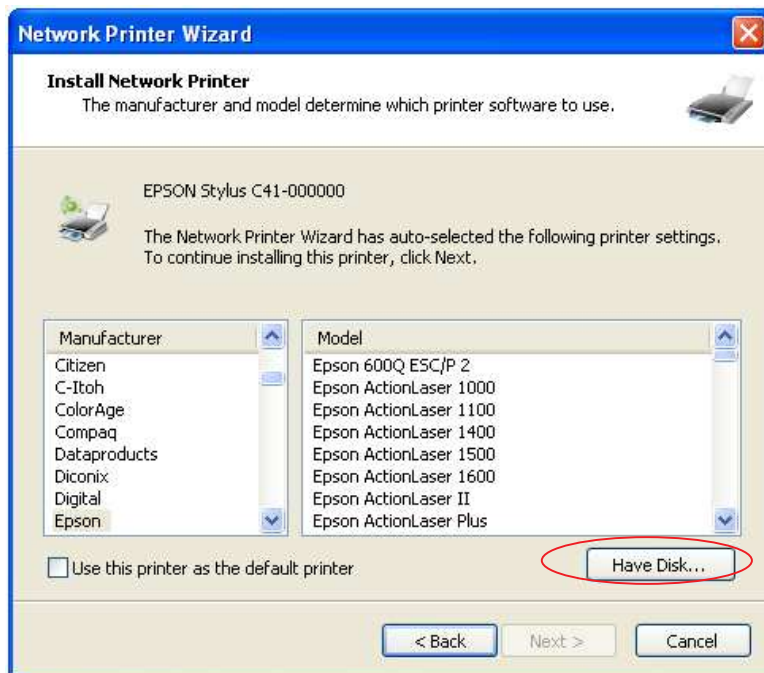
5.2 Click "**NEXT**".



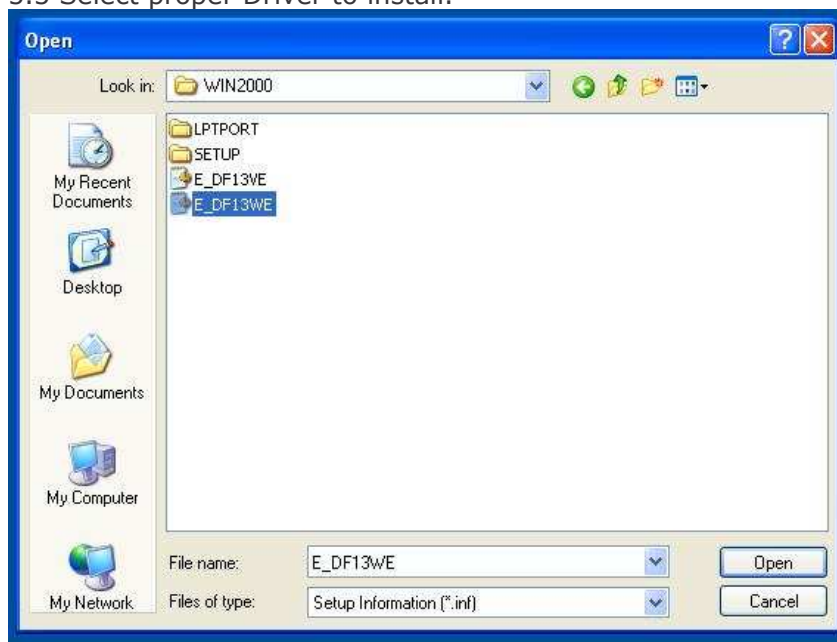
5.3 You would find a shared printer list and select the printer you wish to connect (EPSON Stylus C41 as example here). Click "**NEXT**".



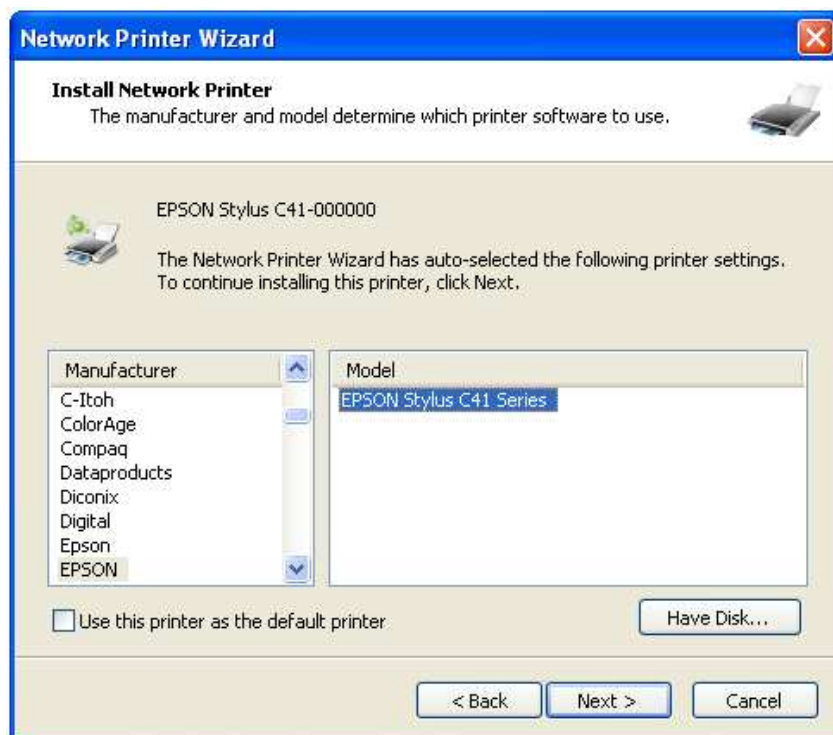
5.4 You are required to install the selected printer driver now. If you already installed, the printer driver before, you should be able to find the printer model on the list. If you never install the printer driver before, you will need to install the printer now. Input your printer driver CD and click "**Have Disk**" to install the printer driver.



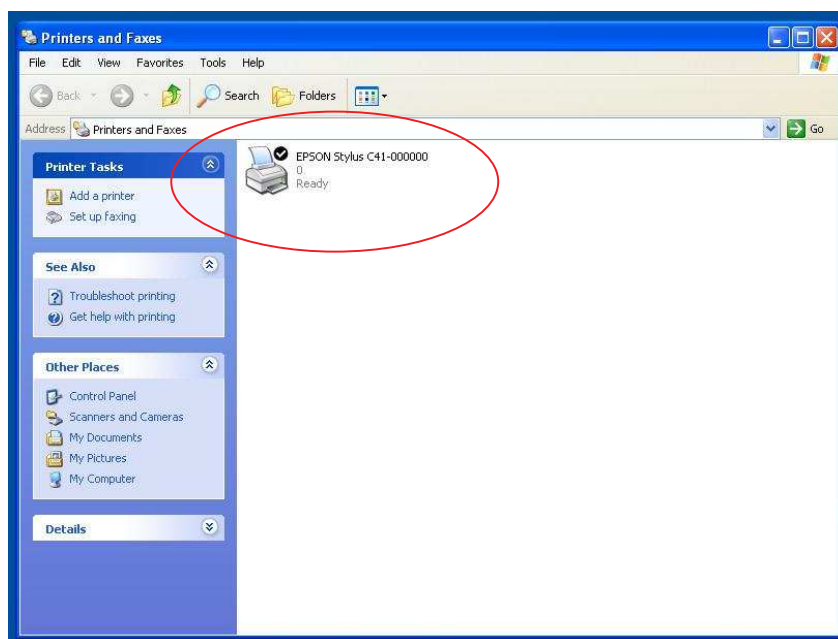
5.5 Select proper Driver to install.



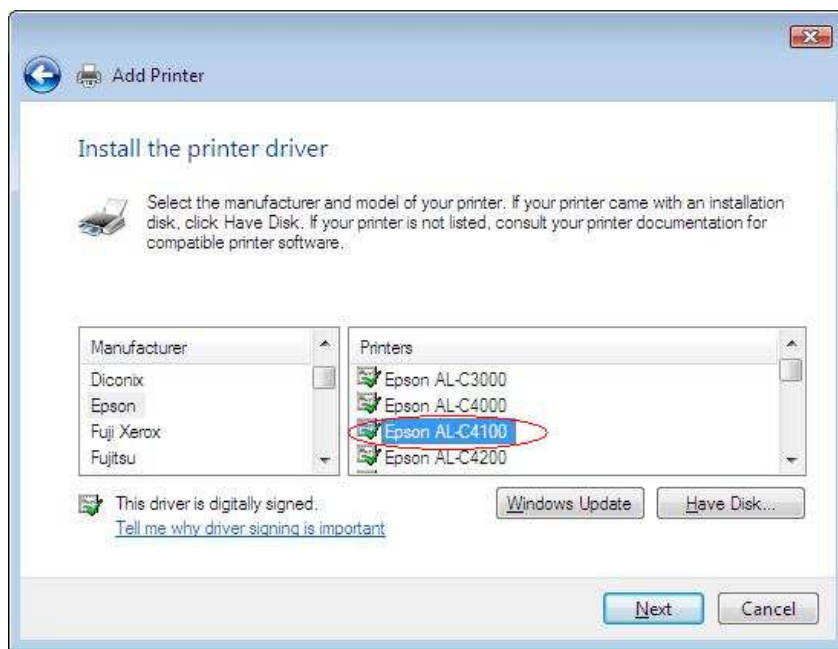
5.6 From the Printer Wizard, please check if the correct printer Manufacturer and Model are shown on the list. Click "**NEXT**" to continue.



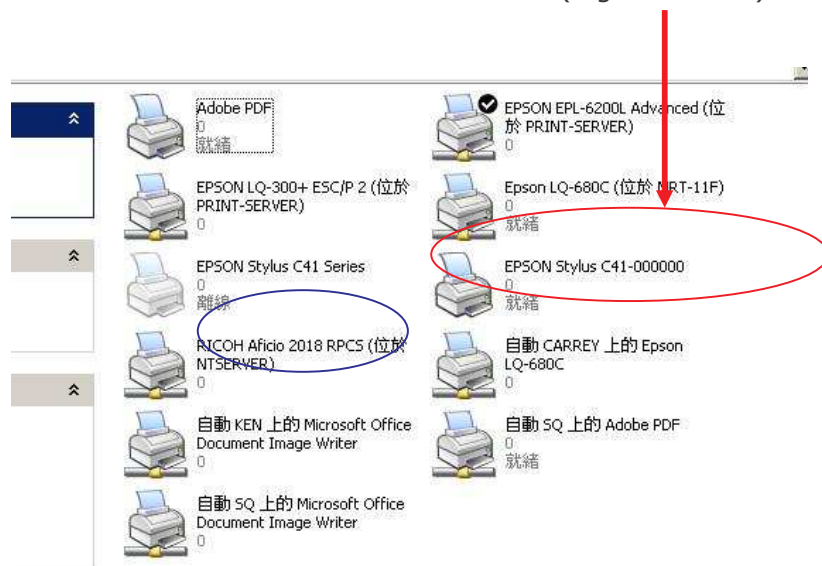
5.7 After the installation, you will find the printer you just installed.



5.8 To print a document, you just select the printer you just installed to print it.



5.9 You will be able to identify which printer is connected with USB Networking Server by the printer model name with an indication of its MAC address (e.g. -xxxxxxx)



6. How to install Rally Utility for connection with USB Storage Device

6.1 Insert CD-Rom in to your computer, and run "Install Rally USB Server".

- 
- Install Rally USB Server
 - Install Network Printer
 - Install SyncQuick Backup
 - User's Manual
 - Browse CD
 - Exit
- 

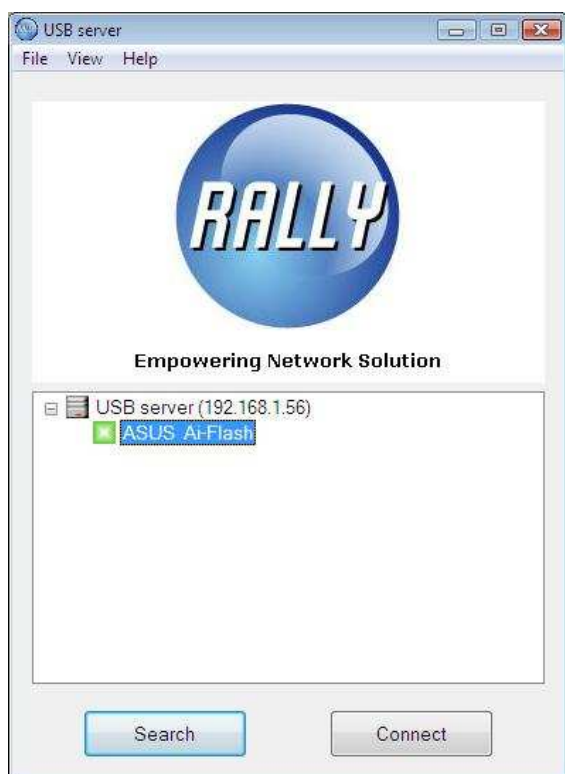
6.2 Run Rally Utility Software

After the installation is completed, Rally icon will appear on your computer desktop. Double click it to run Rally Utility Software.



6.3 Search for Rally Network Device

Click on "**Search**" button or double click on Rally banner to search for Rally Network Device in local network. A device list will show all Rally Network Storage Devices in your local network.



Important information:

When a Rally Network Storage Device is connected directly to a computer or to a LAN hub without a DHCP server function, you simply set your computer IP to be with the same network segment (such as 169.254.10.xxx) with Rally Network Device default IP (169.254.10.10) and then you can locate the device by using Rally Utility Software.

6.4 Rally Network Device icon status

When Rally Network Device is found, you can tell from its icon about its status.

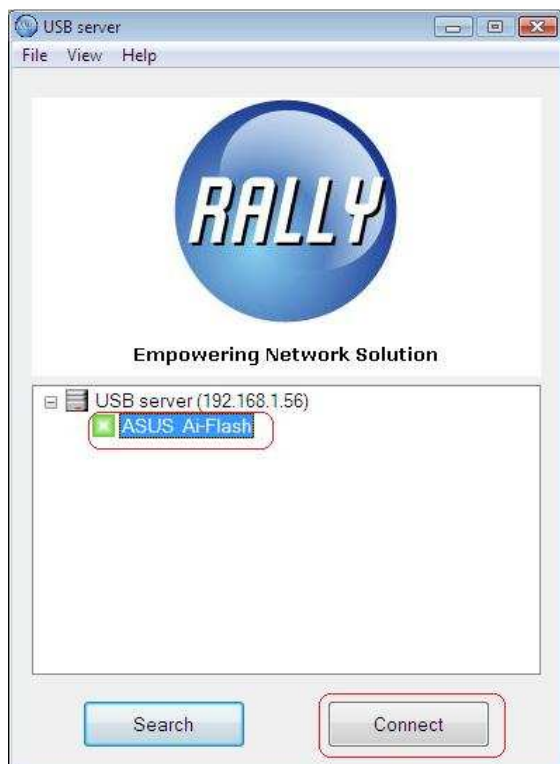
- ASUS Ai-Flash** **Device on line and free for connection**
- ASUS Ai-Flash** **Device occupied by yourself**
- ASUS Ai-Flash** **Device occupied by other user**
- ASUS Ai-Flash** **Device locates in other network segment and not available for connection**

6.5 Connect to USB Network Storage Device

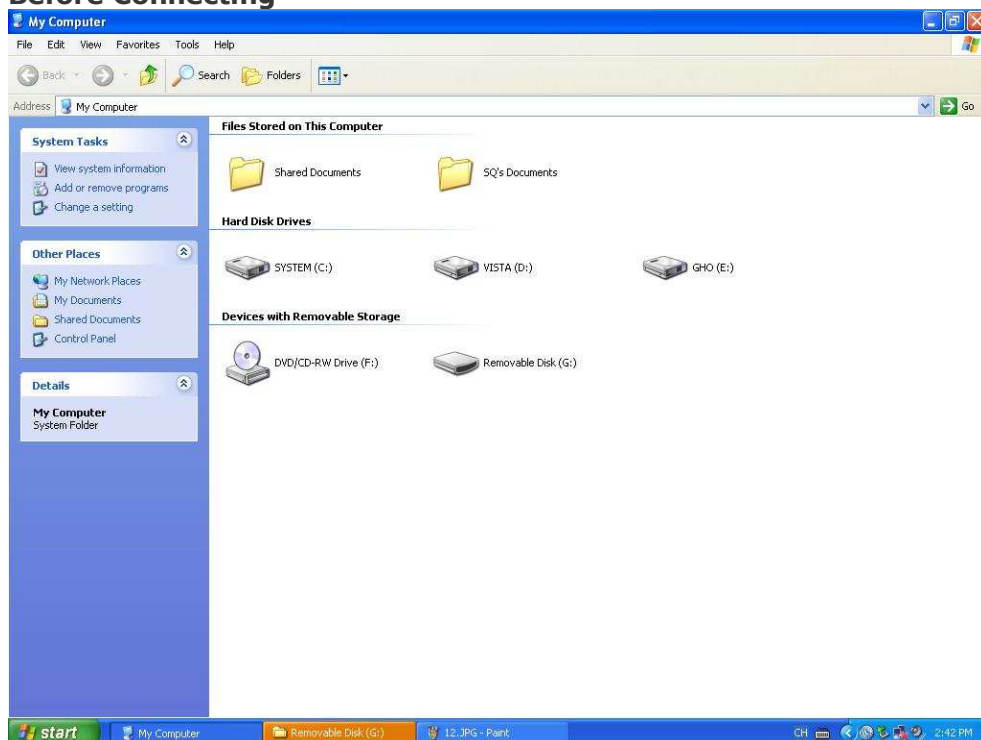
Before you can use a Rally Network Device, you must first **connect** to it. You can think of this "Connect" operation as plugging an external USB storage device into your PC. **Please note that a device can only be connected by ONE user as a time.** The device icons on the device list of the utility would show whether the Rally Network Device is free to use or is occupied.

To connect to the device, please click on **"Connect"** button. The connecting process would take a few seconds. Once connected, the Rally Network Device would appear under "My

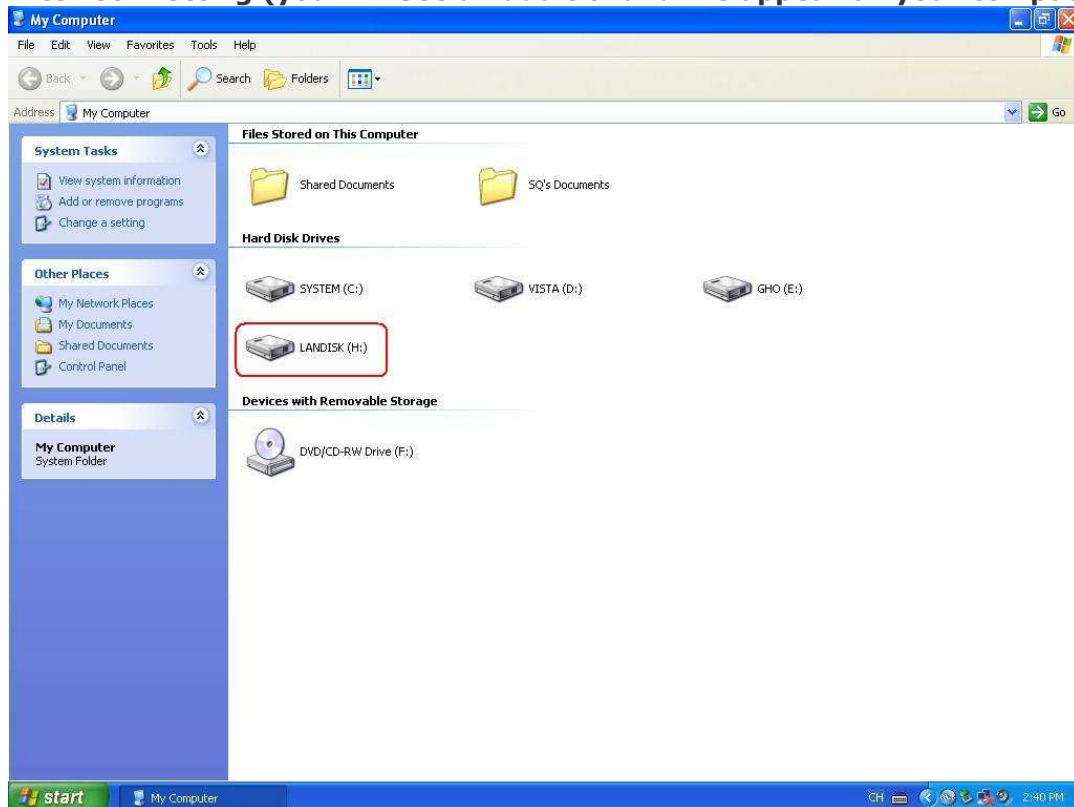
Computer” as one of your local drives. A “free” Rally Network Device would be indicated by an icon that looks like this (in green color):



Before Connecting

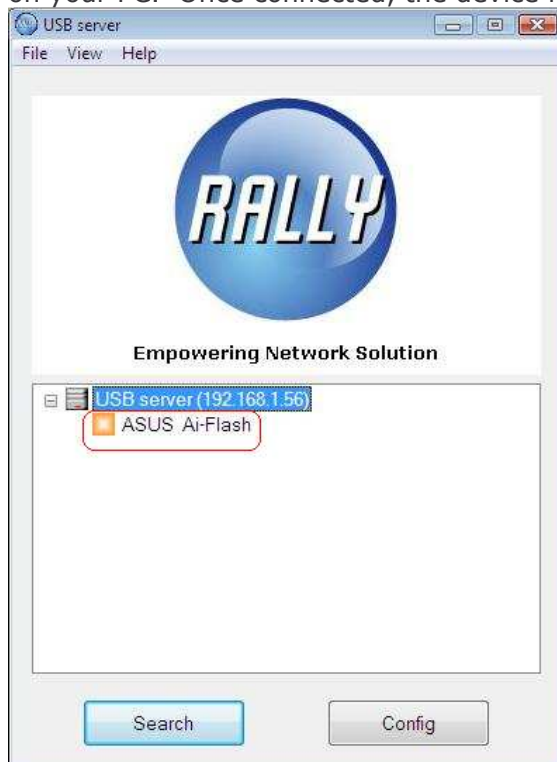


After Connecting (you will see an additional drive appear on your computer)



6.6 Connected device icon

You can then access data on the Rally Network Device as you would from a local hard drive on your PC. Once connected, the device icon color changed on the utility:



6.7 Disconnect from Rally Network Enclosure

To disconnect a device, please click on "**Disconnect**" button. As each Rally Network Device could only be connected by one user at each time, it is important that you disconnect a device once you are done with it so other users could use it.

The icon below indicates that this device is currently occupied by you. Click on the "**Disconnect**" button to disconnect with the device.



6.8 Device locates in other network segment

When Rally Network Device is not located in the same network segment, you will be able to find the device but unable to connect to it. In the picture below, the device is found with blue icon and an "**Unsupport**" disabled button which indicates the device is in other network segment.



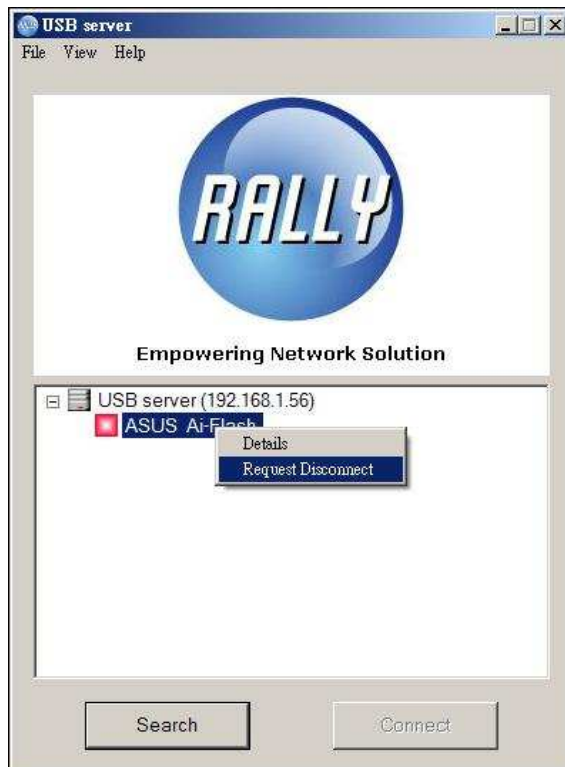
In this case, you can disconnect the device and right click your mouse on "USB Server" and select "**Setting**" to change its IP setting, or you can change the IP of your computer to be in the same segment as of the Rally Network Device. Please refer to 8.1 for more information.



6.9 Device Control Request

To request other user to release a Rally Network Device, you can use the **"Request Disconnect"** option from the mouse right-click menu.

The Rally Network Enclosure icon shows the device is currently connected by other user.



The user who connected to the device will receive a request message for him to decide if agree to disconnect from the Rally Network Device.



7.0 USB Networking Server Configuration

To monitor or maintain a device connected to USB Networking Server, you can click on USB Server and selection "**Config**" button to open up the web-based management GUI of a device.



7.1 Server Status

By clicking on "**Server**", you will be able to see all the device information including Server Status (Server name, MAC address, IP Address ...etc.), Hardware Information (Firmware version, Ethernet Link Mode...) and Special Setting.

RALLY NETWORK		Empowering Network Solution	RALLY
Server Device	Server Status		
	Server Name	USB server	
	IP Address	192.168.1.56	
	Subnet Mask	255.255.255.0	
	Gateway	192.168.1.254	
	Mac Address	6A:B3:F5:00:00:14	
	DHCP(Automatic IP Setting)	Enable	
	Server Uptime	0 days, 0 hours, 20 minutes, 26 seconds.	
	Hardware Information		
	Firmware Version	V. 3.100.063	
	Ethernet Link Mode	100M/Full Duplex	
	USB Host Mode	High Speed	
	Special Setting		
	Network Configuration	Password Change	
	Factory Default	Server Reset	

7.1.1 Special Setting

You are able to proceed Network configuration, password setting through "**Special Setting**".

A. Network Configuration

You can do network configuration by clicking on "**Network Configuration**" option in the web control page. You are able to set up Server Name, IP Address, Subnet Mask, Default Gateway, DHCP and Password.

Special Setting	
<u>Network Configuration</u>	Password Change
Factory Default	Server Reset

RALLY NETWORK		Empowering Network Solution	RALLY
Server Device	Network Settings		
	Server Name	USB server	
	IP Address	192 . 168 . 1 . 56	
	Subnet Mask	255 . 255 . 255 . 0	
	Default Gateway	192 . 168 . 1 . 254	
	DHCP(Automatic IP Setting)	Enable ▾	
	Password	<input type="password"/> *Mandatory*	
		Submit Clear	

You also able to do Networking setting by right click on Server icon and select "**Setting**".

Server Setting

Network Settings

Server Name: USB server

☒ DHCP

IP Address: 192 . 168 . 1 . 56

Subnet: 255 . 255 . 255 . 0

Set Cancel

Backup Firmware

Update Firmware

Change Password

Reset Server

B Password Set

Password Set is a very important function for administration purpose. Once the Rally Network Device is set with a password, you are unable to access to the web control page without the password. The default setting is without any password.

Special Setting

Network Configuration Password Change

Factory Default Server Reset

RALLY NETWORK Empowering Network Storage **RALLY**

Server Device

Administration

Current Password *Mandatory*

New Password

Confirm Password

Submit

C. Factory Default

You are able to reset Rally Network Device back to the factory default setting and by inputting a password. You can prevent anyone from resetting the default setting without the correct password. The default setting is without any password.

Special Setting	
Network Configuration	Password Change
Factory Default	Server Reset

RALLY NETWORK		Empowering Network Solution	RALLY
Server Device	Special Commands		
	Password	<input type="text"/>	*Mandatory*
	Factory Default		

D. Server Reset

Click on "**Server Reset**" button allow you to reset the device via local network.

Special Setting	
Network Configuration	Password Change
Factory Default	Server Reset

RALLY NETWORK		Empowering Network Solution	RALLY
Server Device	Special Commands		
	Password	<input type="text"/>	*Mandatory*
	Reset Server		

7.2 Device Status

By clicking on "**Device**" button, you are able to see the device connected and more device information will be shown by further click on the device

RALLY NETWORK		Empowering Network Solution	RALLY	
Server Device				
	Device Name	Link Status	Device Status	Occupied Host Name
	ASUS Ai-Flash	Online	Ready	

RALLY NETWORK		Empowering Network Solution	RALLY
Server	Device Information		
	Manufacturer	ASUS	
	Model	Ai-Flash	
	Queue Name		
	Link Status	Online	
	Occupying Host Name		
	Occupying Host IP		
	Device Status	Ready	
	USB Mode	Full Speed	

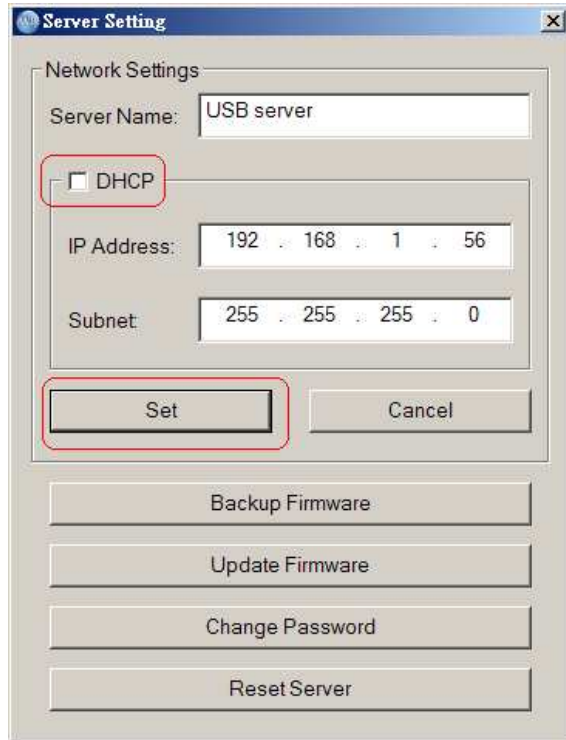
8. USB Networking Server Management

Except for setting from the Web-Control page, you are able to do more setting for the device connected to the USB Networking Server by clicking on the server icon and select "**Setting**"



8.1 Change Server name and Network setting

You are able to change server name and also do quick Networking setting here. To change Networking setting, please cancel DHCP selection and input the IP address and Subnet. After the input, click "**Set**" to confirm setting.



The screenshot shows a 'Server Setting' window with a 'Network Settings' section. The 'Server Name' is 'USB server'. The 'DHCP' checkbox is unchecked and highlighted with a red rectangle. The 'IP Address' is '192.168.1.56' and the 'Subnet' is '255.255.255.0'. The 'Set' button is highlighted with a red rectangle, and the 'Cancel' button is visible. At the bottom, there are buttons for 'Backup Firmware', 'Update Firmware', 'Change Password', and 'Reset Server'.

8.2 Backup Firmware

By clicking on Backup Firmware button, you are able to save the current firmware of the Rally network device for backup.

Server Setting

Network Settings

Server Name: USB server

☐ DHCP

IP Address: 192 . 168 . 1 . 56

Subnet: 255 . 255 . 255 . 0

Set Cancel

Backup Firmware

Update Firmware

Change Password

Reset Server

Backup Firmware

Backup File : C:\Program Files\Rally solution\USB Server\2008071013

Browse

Submit Cancel

8.3 Firmware Update

You are able to update the firmware of your Rally Network Device via "**Firmware Update**" page. Before you update a firmware, please make sure the firmware is workable and from the original vendor who you purchased the device. Be cautious that any failure in firmware update process will damage the device and the device will not work any more.

Server Setting

Network Settings

Server Name: USB server

☐ DHCP

IP Address: 192 . 168 . 1 . 56

Subnet: 255 . 255 . 255 . 0

Set Cancel

Backup Firmware

Update Firmware

Change Password

Reset Server

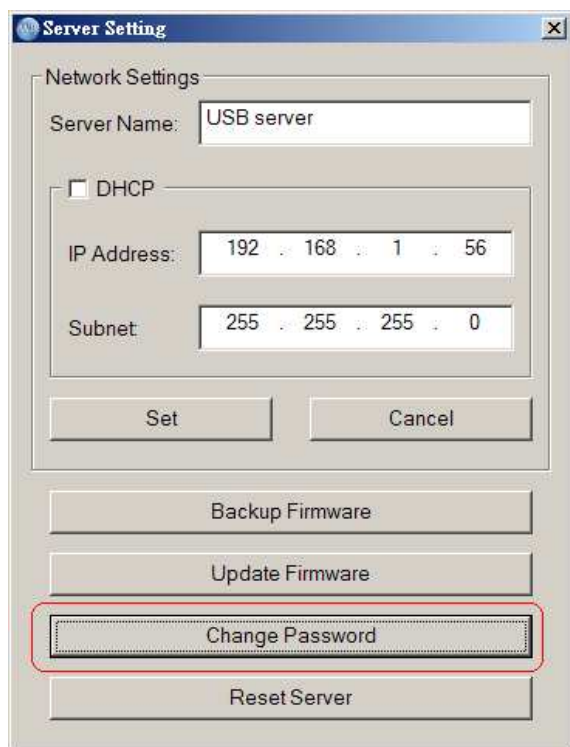
Backup Firmware

Backup File : C:\Program Files\Rally solution\USB Server\2008071013 Browse

Submit Cancel

8.4 Change Password

Clicking on **"Change Password"**, you are able to change the password for entering this Setting panel.



8.5 Reset Server

Click on "**Reset Server**" button allow you to reset the device via local network.

