

Gigabit Ethernet PCI-Express Card

The Gigabit port feature:

Compliant with PCI Express™ 1.1

- _ Compliant with IEEE 802.3, IEEE 802.3u, and IEEE 802.3ab
- _ Integrated one-lane 2.5GHz PCI Express PHY
- _ Integrated 10/100/1000Mbps transceiver
- _ Automatic MDI/MDI Crossover Correction
- _ Support Microsoft® NDIS 5, NDIS6 Checksum Offload (IPv4, IPv6, IP, TCP, UDP)
- _ Support IEEE 802.1P Layer 2 Priority Encoding
- _ Support IEEE 802.1Q VLAN insertion and removal
- _ Support multi-entry MSI and multi-vector MSI-X.
- _ Support D3 Enhanced Power Down Mode

System Requirements:

- A computer with a Pentium Pro®, Pentium® IV, or equivalent processor with 1 available PCI express slot.
- Microsoft® Windows® XP/VISTA/7/8(32/64bit)

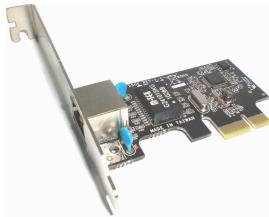
Package Contents:

This Gigabit Ethernet PCI Express Card package includes the following items:

- Hardware installation guide
- Software installation guide
- PCI Express Card
- Driver CD

Hardware Installation:

Please refer to the included hardware installation guide for step-by-step instructions on how to install your new product.



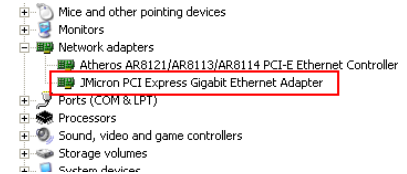
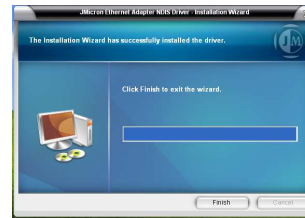
Software installation:

SETUP Installation for Windows XP/vist/7(32/64bit)

1. Insert the card into your computer's PCI-E slot.
2. Start your computer with Windows XP/vista/7.
3. First, when the system starts, Windows will find new hardware "Ethernet Controller" and install the driver, the screen not to carry out action.
4. Please enclose CD into the CD - ROM and then click on the driver (CD-ROM: setup.exe)

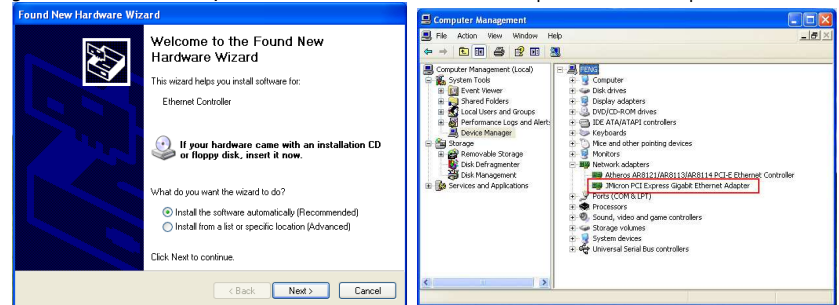


5. Click "install" button in to program will copy the driver files to your Windows system.
6. Click Remove the diskette, The Gigabit Ethernet PCI-Express card is now ready to use.



Windows XP/VISTA/7(32/64bit) Driver install from specific location:

1. At the Add New Hardware Wizard windows®, click on "Next"
2. Select the option "Search for the best driver for your devices (Recommend) " and click on "Next"
3. Select the option "Specify the location "and type in d:\Uart (Disk D:CD-ROM)/driver(XP/Vista or 7) then click on "Next"
4. Click "Next" and then "Finish" to complete the Ethernet installation.
5. Remove the diskette, then select "Yes" to restart the computer for the setup to take effect.



To verify successful installation in Windows® XP/VISTS/7:

1. From the main desktop, click on " My Computer", then double-click on "Control Panel, System", and " Device Manager".
2. Double-click on "Network adapters", you should find "JMicom PCI Express Gigabit Ethernet Adapter". The Gigabit Ethernet PCI-Express card is now ready to use.

Windows 8 Driver Installation

No driver or software installation is required for supported operating systems, as this card is natively supported.



To verify successful installation in Windows® 8

1. From the main desktop, click on " My Computer", then double-click on "Control Panel, System", and " Device Manager".
2. Double-click on "Network adapters", you should find "JMicron PCI Express Gigabit Ethernet Adapter". The Gigabit Ethernet PCI-Express card is now ready to use